



DARLINGTON

Borough Council

Children and Young People Scrutiny Committee Agenda

9.30 am

Monday, 27 June 2022

Council Chamber, Town Hall, Darlington. DL1 5QT

Members of the Public are welcome to attend this Meeting.

1. Introductions/ Attendance at Meeting
2. Appointment of Chair for the Municipal Year 2022/23
3. Appointment of Vice-Chair for the Municipal Year 2022/23
4. Declarations of Interest
5. To consider the times of meetings of this Committee for the Municipal Year 2022/23 on the dates agreed in the Calendar by Cabinet at Minute C100/Feb/22
6. To approve the Minutes of the meeting of this Scrutiny Committee held on 25 April 2022 (Pages 3 - 6)
7. Missing and Exploited Operational Change –
Report of the Head of Service, Children’s Front Door and Early Intervention
(Pages 7 - 10)
8. Performance Indicators 2020/21 –
Report of the Group Director of People
(Pages 11 - 40)
9. Work Programme –

Report of the Group Director of Operations
(Pages 41 - 54)

10. SUPPLEMENTARY ITEM(S) (if any) which in the opinion of the Chair of this Committee are of an urgent nature and can be discussed at this meeting
11. Questions



Luke Swinhoe
Assistant Director Law and Governance

Friday, 17 June 2022

Town Hall
Darlington.

Membership

Councillors Ali, Bell, Crudass, C L B Hughes, L Hughes, Johnson, Lucas, Preston, Snedker, Sowerby and Willis

Statutory Co-optees

Malcolm Frank and Carly Spence

Non Statutory Co-optees

Maura Regan, Tim Fisher, Nick Lindsay, Janet Woodcock and John Armitage

If you need this information in a different language or format or you have any other queries on this agenda please contact Allison Hill, Democratic Officer, Operations Group, during normal office hours 8.30 a.m. to 4.45 p.m. Mondays to Thursdays and 8.30 a.m. to 4.15 p.m. Fridays email: allison.hill@darlington.gov.uk or telephone 01325 405997

CHILDREN AND YOUNG PEOPLE SCRUTINY COMMITTEE

Monday, 25 April 2022

PRESENT – Councillors Crudass (Chair), C L B Hughes, Renton, Snedker, Sowerby and Willis

STATUTORY CO-OPTees – None

NON-STATUTORY CO-OPTees – None

APOLOGIES – Councillors Ali, Mrs Culley, Lister and Lucas, Carly Spence, Tim Fisher, Nick Lindsay and John Armitage

ABSENT – Councillor Bell, Malcolm Frank, Maura Regan and Janet Woodcock

OFFICERS IN ATTENDANCE – Allison Hill (Democratic Officer), Tony Murphy (Head of Education and Inclusion), Chris Bell (Assistant Director of Children's Services) and Calvin Kipling (Virtual Head Teacher)

CYP38 DECLARATIONS OF INTEREST

There were no declarations of interest reported at this meeting.

CYP39 TO APPROVE THE MINUTES OF THE MEETING OF THIS SCRUTINY COMMITTEE HELD ON 21 FEBRUARY 2022

Submitted – The Minutes (previously circulated) of the meeting of this Scrutiny Committee held on 21 February, 2022.

With regard to Minute CYP36/Feb/22, Councillor C Hughes requested that an amendment be made to the Minutes to reflect that a request had been made by Members for an assurance that in relation to Parkside Nursery funding and space issues, referred to in the submitted report, the Assistant Director of Education report back to Members the position regarding the Nursery at a future meeting of Scrutiny.

RESOLVED – That, with the exception to the amendment to CYP36/Feb/22, the Minutes of the meeting of this Scrutiny Committee held on 21 February 2022 be approved as a correct record.

CYP40 PERFORMANCE INDICATORS QUARTER 3 2021/22

The Assistant Director of Children's Services submitted a report (previously circulated) to provide Members with an update on performance against key performance indicators.

The submitted report provided Quarter 3 (October 2021 to December 2021) performance information in line with an indicator set agreed by the Monitoring and Co-ordination Group and subsequently by each individual Scrutiny Committee.

The submitted report also highlighted where Children and Young People were performing

well and where there was a need to improve. It was also outlined that where indicators are reported annually, quarterly updates will not be available.

It was highlighted that 10.8 per cent of the children referred during this quarter had been re-referred to Children's Social Care within 12 months of a previous referral which was positively below the internal target of 18 per cent; 100 per cent of children with a Child Protection (CP) plan and 100 per cent of Children in Care (CiC) had an allocated social worker; no child had ceased to be subject to a CP plan who had been subject to the plan for two or more years, and continue to positively perform below the target of five per cent; 92.1 per cent of Initial Child Protection Conferences were held within 15 working days from the strategy meeting/Section 47 being initiated during this quarter; the number of Children in Care (CiC) was 271 by the end of December 2021, which was a reduction when compared with the number of children at the end of December 2020 (284) and work continues to safely reduce the number of children coming into care; 100 per cent of Children in Care (CiC) had been allocated a qualified social worker and 98.4 per cent of the reviews had been completed within the required timescales; 89.8 per cent of statutory CiC visits were completed within timescale during Q3 in line with the target of 90 per cent; 10.0 per cent of our Children in Care, as of December 2021, had 3 or more placements within the previous 12 months and performance was positively below the internal target of 10 per cent; 73.5 per cent of Children in Care aged under 16 (who have been looked after for at least 2.5 years) had been in their current placement continuously for at least two years, in line with the internal target of 68 per cent; 6.1 per cent of Children in Care had been placed 20 or more miles away from home as of December 2021 below the target of 10 per cent; 82.7 per cent of children due a review health assessment year to date had one completed and 80.4 per cent of Children in Care that were due a dental check assessment by December 2021 had had one completed; and 17.6 per cent of Care Leavers were not in employment, education or training (NEET) at the end of December 2021, which was positivity below target of 30 per cent and 100.0 per cent were in suitable accommodation.

The areas highlighted for focus were in respect of Social workers completed 80.0 per cent of the C&F assessments within timescale which falls below the target of 90 per cent and is similar to the 85.4 per cent for the same period last year; 67.7 per cent of referrals were screened and completed within 1 day by the end of Q3, below the target of 90 per cent and 7.7 per cent of the referrals took over three days to complete; at the end of December 2021, the percentage of children becoming subject to a Child Protection Plan for a second or subsequent time within two years of the previous plan ending was 8.0 per cent, above the 6 per cent target, however this was a reduction from 9.8 per cent as at the end of Q2 2021/22; and 82.3 per cent of children received a statutory CP visit within 10 working days during Q3 below the target of 90 per cent.

Members expressed their concerns regarding the slippage in the target for referrals screened and completed within one day as this was a statutory responsibility and Members requested assurance that this was not a safeguarding issue. The Assistant Director Children's Services assured Members that this was not a capacity issue and it had been recognised and advised Members that the redesign of the 'front door' should see this performance indicator improve. He also assured Members that he was confident there were no safeguarding issues and the new systems will improve the breakdown of timeliness.

Members questioned the process for schools making referrals and how the governing bodies

were kept informed of this performance data; and also referred to the number of episodes of children reported missing in Darlington who are a Child in Care (CiC) and the processes in place for reporting missing episodes to the local authority.

RESOLVED – That the performance information reported for Quarter 3 2021/22 be noted.

CYP41 VULNERABLE PUPIL PANEL REVIEW

The Assistant Director of Education and Inclusion submitted a report (previously circulated) to advise Members on the work and impact of the Darlington Vulnerable Pupil Panel (VPP), the multi-agency panel of which the Local Authority is a part.

It was reported that the Panel was created in 2019 to replace the previous arrangements of the School Behaviour and Attendance Partnership and since its inception has formed a dynamic multi-agency partnership which aims to avoid children disengaging from education due to any cause.

It was also reported that the Panel had seen a reduction in permanent exclusion and persistence absence had improved to 9.8 per cent and was 0.7 per cent better than above the national figure for all pupils and 17.1 per cent for disadvantaged pupils which was now 2.9 per cent better than the national figure and the work of the Panel had shown a reduction in the gap between all children and vulnerable groups.

Members of this Scrutiny were currently undertaking a review of the Vulnerable Pupil Panel and it was reported that as part of that Review Members had met with some members of the Parent Carer Forum on 16 March 2022 and discussed any issues and concerns.

Members discussed the overall attendance of the VPP; membership of the Panel which included the headteacher of every primary, secondary and special school, a number of other organisations/local partner agencies and various officers from the authority including the Lead Member for Childrens' Services; and how the VPP operated on a case referral basis and how any partner could refer a children for consideration.

RESOLVED – That the report be noted.

CYP42 WORK PROGRAMME

The Group Director of Operations submitted a report (previously circulated) requesting that consideration be given to this Scrutiny Committee's work programme and to consider any additional areas which Members would like to suggest should be included in the previously approved work programme.

It was suggested that the Assistant Chief Constable be invited to the next ordinary meeting scheduled for 27 June 2022; also a question was raised regarding healthy school dinners and it was agreed that this be included in the Public Health Overview report to Members in September 2022.

RESOLVED – That the work programme be noted.

This page is intentionally left blank

**CHILDREN AND YOUNG PEOPLE SCRUTINY COMMITTEE
27 JUNE 2022**

MISSING AND EXPLOITED OPERATIONAL CHANGE

SUMMARY REPORT

Purpose of the Report

1. To update on operational changes, improvements and developments in relation to the Missing and Exploited Service

Main Report

Brief Context

2. The Children's Front Door remodelled in March 2020. This major change brought about a different way of working and an opportunity to make sure the right service is provided swiftly to our children and their families, this is achieved through discussion facilitated by a dedicated phone line manned by social workers, replacing the emailing of written referrals. This approach allows for a much more relational approach with our internal and external partners, and importantly with our children and their families, it also allows for the social worker and caller to gain a deeper understanding of the concerns for the child and means they work together in a far more meaningful way than can be achieved from written information.
3. This remodelling at the Front Door transformed the Children's Access Point (CAP) into the Children's Initial Advice Team (CIAT), CIAT is now at the forefront of an ever-growing Front Door Service. The growth of this service has been both rapid and successful, led by the needs of children and families. One area in particular has seen much improvement and change, this being children who go missing and who are at risk of exploitation.

The Missing and Exploited Team

4. Prior to the launch of CIAT a part-time Missing From Home Worker and a full time Child Sexual Exploitation Worker were part of CAP. These workers are commissioned from Barnardo's and play a pivotal role in offering children and young people an independent service. A review around the impact these workers were having on tackling this important area of safeguarding found that whilst the two workers were successful in terms of the work carried out with the children and young people, the workers often worked in isolation from one another and did not always work across services as well as they could, it was determined the service could be improved further.
5. In October 2020 the Missing and Exploitation Team was formed. The team is made up of one Team Manager; one Advanced Practitioner; one Missing From Home Worker; one Exploitation Worker and the SWITCH Team, the SWITCH team is made up of three full time

equivalent Children's Substance Misuse Workers. The team sits within the Front Door Service and so forms part of a much larger multi-agency group. The original part-time Missing From Home Worker post was increased to a full time post, and the Child Sexual Exploitation Worker became known as a Child Exploitation Worker, reflecting the shift in how exploitation is viewed and the need to work with children with a broader focus of exploitation and not just one that is focussed around child sexual exploitation.

6. Since the end of 2020 a further review has taken place, this review focussed on the impact of operational processes, exploring how these processes support the improvement of practice, there was also a sharp focus on outcomes. The findings from this review were that the various meetings and forums were informative but facilitating the duplication of discussions being held about the same children, the same professionals tended to be in attendance at both meetings and the plans and discussions were not as outcome focussed as they could be. The meetings tended to be reviews of what information had been gathered since the previous meeting rather than impactful arenas where actions are set with timescales and where activities such as disruption and better outcomes were brought about.

Operational processes currently in place

7. At present there is a weekly meeting held known as the Child Exploitation Vulnerability Tracker Meeting, a Multi-Agency Missing Meeting held every two weeks and the Child Exploitation Operational Group which is held monthly.
8. The Child Exploitation Vulnerability Tracker Meeting is multi-agency in nature and considers Police referrals and referrals where a Child Exploitation Matrix has been completed by any professionals who might have worries about a child being exploited. Any matrix that concludes a child is at moderate or significant risk will be discussed at the meeting and from that meeting if the outcome is that the child is deemed to be at high risk then the child is adopted onto the Child Exploitation Group, this is the arena where children at the greatest risk of exploitation are discussed.
9. The most recent review of these operational processes found that children discussed at the Child Exploitation Meeting are not always considered in a contextual way and due to this the missing episodes they experience are not reviewed in detail, the Multi-Agency Missing Meeting considers these missing episodes in a separate forum to the Child Exploitation Group, therefore an opportunity is missed to consider missing episodes along with risks around exploitation and as research and our growing knowledge of children and young people who go missing in Darlington tells us, children who go missing are at the greatest risk of exploitation.

Plan for Change

10. The Child Exploitation Vulnerability Tracker Meeting will remain as the pathway to explore and consider referrals using the Child Exploitation Matrix Tool where children are deemed to be at risk of moderate to significant risk of harm. Where a Child Exploitation Matrix Tool concludes as Low risk, or when the Child Exploitation Vulnerability Tracker Meeting determines the level of risk as moderate then a contact enquiry will be carried out by a social worker in CIAT, this will ensure the appropriate referral is made. If the child is already open to services then the Team Manager in the Missing and Exploited Team will be

notified and contact will be made with the lead professional to discuss a plan for the child, ensuring the element of exploitation remains a feature of all work and assessment.

11. A Community Safety Check In Meeting is now being held each Tuesday and Thursday morning. This meeting was borne out of a Learning Review in respect of a young person who was exploited. The meeting is dynamic and responsive to whatever issues arise through discussion, the session is an opportunity to share any information that informs on what is happening in the community, it takes a preventative approach to tackling the issue of exploitation in whatever form. It provides an opportunity to share information about specific children and young people where there are particular concerns, including the locations (hotspots) they may be frequenting, it also allows for identification and an understanding of who else the children and young people might be associating with. When specific children or 'hotspots' are identified then invites for professionals involved with that child, or who work in the community where they live or frequent are sent out and they attend the next meeting. Actions are agreed in order to take a preventative approach and reduce any potential for harm to occur where deemed necessary. If serious concerns are identified then Children's Social Care and Police take the lead on this without delay. This meeting is very much viewed as a starting point in terms of tackling this issue from a preventative approach.
12. An Early Intervention Exploitation Panel will be held monthly, this will be multi-agency in nature and will focus on specific children identified within the Community Safety Check In Meetings, or when a Child Exploitation Matrix Tool has identified the risk of exploitation as Low or Moderate. The Panel will be chaired by the Service Manager responsible for Early Intervention and the Young Peoples Engagement and Justice Service.
13. The Child Exploitation Group will become the Missing and Exploitation Group. This will ensure duplication of discussion does not take place, children who go missing will be discussed, as well as those deemed to be at significant risk of harm from exploitation. This will replace the need for the Multi-Agency Missing Meeting. The meeting will be chaired by the Service Manager responsible for the Children's Front Door, it will be outcome focussed and make sure a contextual approach to children's lives is taken.
14. A preventative approach to tackling the issue of children who go missing, and children at risk of exploitation was not always evident or in place in terms of an operational response. The remodelling of the Front Door and the forming of the Missing and Exploitation Team, together with the joining up of services both with internal and external partners is now supported by a dynamic and wide reaching approach and recognises and responds to the evolving nature of this area of safeguarding.
15. The revised processes mean all children and young people from the very early stages where a preventative approach is so important, to the needs of children and young people at the most significant risk of harm will receive the right level of support and help whether this is complex safety planning and sophisticated disruption tactics, or involvement at an early intervention level. It is expected the child and their parents, carers and family members will have the opportunity to work in a restorative way from the outset and that this approach is one that will ensure any involvement from Children's Services and internal and external partners will bring about a positive impact on children and their families.

16. Of interest, on 2 February 2022 an event took place that reached over 150 internal and external partners/professionals. The event was very successful and the feedback was excellent, the conference focussed on the issue of contextualised safeguarding, or what Darlington regards as the issue of ‘Harm Away From Home’. This event has helped launch how best we can tackle issues that relate to ‘Harm Away From Home’ in partnership with children and young people, their families and by working with any professional best placed to help reduce the risk of harm. The link to access some of the presentations and discussion at this event is <https://intranet.darlington.gov.uk/services-search/children-families-and-learning/workforce-development/training-course-materials/harm-away-from-home/>

Recommendation

17. It is recommended that Scrutiny members note the contents of the report.

Alison Poulter
Head of Service – Children’s Front Door and Early Intervention

Background Papers

Section 17 Crime and Disorder	This report has no implications for Crime and Disorder.
Health and Wellbeing	This report has no direct implications to the Health and Well Being of residents of Darlington.
Carbon Impact and Climate Change	There are no issues which this report needs to address.
Diversity	There are no issues relating to diversity which this report needs to address.
Wards Affected	The impact of the report on any individual Ward is considered to be minimal.
Groups Affected	The impact of the report on any individual Group is considered to be minimal.
Budget and Policy Framework	This report does not represent a change to the budget and policy framework.
Key Decision	This is not a key decision.
Urgent Decision	This is not an urgent decision.
Council Plan	The changes set out in this report contribute to the Council Plan in a number of ways but in particular will assist in working with communities to maximise their potential.
Efficiency	This report does not identify specific efficiency savings.
Impact on Looked After Children and Care Leavers	The changes set out in this report will strengthen and improve the way in which children who are Looked After, and who are Care Leavers and who might go missing, or be at risk of exploitation are responded to.

CHILDREN AND YOUNG PEOPLE SCRUTINY COMMITTEE 27 June 2022

PERFORMANCE INDICATORS 2021/22

Purpose of the Report

1. To provide Members with an update on performance against key performance indicators.

Summary

2. This report provides year-end performance information (April 2021 – March 2022) in line with an indicator set agreed by Monitoring and Coordination Group on 2 July 2018, and subsequently by Scrutiny Committee Chairs.
3. It is suggested monitoring focuses on issues and exceptions, and relevant Assistant Directors will attend the meeting to respond to queries raised by the committee regarding the performance information contained within this report.
4. Where indicators are reported annually, quarterly updates will not be available.

Where are we performing well?

5. 10.5% of the children referred, by the end of March 2022, have been a re-referral to Children's Social Care within 12 months of a previous referral. This is positively below the internal target of 18%.
6. 4.7% of the referrals took over 3 working days to be completed in 2021/22 which is positively just below our target of 5%.
7. 100% of children with a Child Protection (CP) plan, and 100% of Children in Care (CiC) have an allocated social worker.
8. In 2021/22 no child has ceased to be subject to a CP plan who had been subject to the plan for 2 or more years, we continue to positively perform below our target of 5%.
9. 100.0% of Children in Care (CiC) were allocated to a qualified social worker. 98.8% of the reviews have been completed within required timescales by the end of March 2022.
10. The number of Children in Care (CiC) was 273 by the end of March 2022, with 100 children coming into care and 99 ceasing care during the reporting year. Work continues to safely reduce the number of children coming into care.
11. 90.1% of statutory CiC visits were completed within timescale in 2021/22. This is in line with the target of 90%.

12. 10.6% of our Children in Care, as of March 2021, have had 3 or more placements within the previous 12 months. This performance is in line with our internal target of 10%.
13. 74.0% of our Children in Care aged under 16 (who have been looked after for at least 2.5 years) have been in their current placement continuously for at least 2 years. This performance is positively above our internal target of 68%.
14. 6.6% of our Children in Care have been placed 20 or more miles away from home as of March 2022. This is a positive performance and below target of 10%.
15. 90.5% of children in care due a review health assessment by March 2022 have had one completed. 83.7% of the children that were due a dental check assessment by March 2022 have had one completed.
16. 23.1% of Care Leavers were Not in Employment, Education or Training (NEET) at the end of March 2022, which is positivity below target of 30% and 100.0% were in suitable accommodation.

Where do we need to improve?

17. 72.1% of referrals were screened and completed within 1 working day in 2021/22, below the target of 90%. Late completions are scrutinised by the manager and the additional time taken to carry out contact enquiries is ensuring that all information is complete, and that children and families are being offered the right service at the right time.
18. Social workers completed 84.5% of the C&F assessments within timescale in 2021/22, below our target of 90%, and is similar to the 86.4% completed in timescale for the same period last year.
19. 79.3% of Initial Child Protection Conferences (ICPC) were held within 15 working days from the strategy meeting / section 47 being initiated, excluding transfer-in conferences, in 2021/22.
20. At the end of March 2022, the percentage of children becoming subject to a CP plan for a second or subsequent time within 2 years of the previous plan ending was 7.1%, above the 6% target, however this is a reduction from 9.4% as at the end of March 2021.
21. 82.9% of children received a statutory CP visit within 10 working days in 2021/22. This is below the target of 90%.

Recommendation

22. It is recommended:
 - a) That performance information provided in this report is reviewed and noted, and relevant queries raised with the appropriate Assistant Director.

James Stroyan
The Group Director of People

Background papers

No background papers were used in the preparation of this report.

Sharon Raine Head of Performance and Transformation: Extension 6091

S17 Crime and Disorder	This report supports the Council's Crime and Disorder responsibilities
Health and Well Being	This report supports performance improvement relating to improving the health and wellbeing of residents
Sustainability	This report supports the Council's sustainability responsibilities
Diversity	This report supports the promotion of diversity
Wards Affected	This report supports performance improvement across all Wards
Groups Affected	This report supports performance improvement which benefits all groups
Budget and Policy Framework	This report does not represent a change to the budget and policy framework
Key Decision	This is not a key decision
Urgent Decision	This is not an urgent decision
One Darlington: Perfectly Placed	This report contributes to the Sustainable Community Strategy (SCS) by involving Members in the scrutiny of performance relating to the delivery of key outcomes
Efficiency	Scrutiny of performance is integral to optimising outcomes.
Impact on Looked After Children and Care Leavers	This report may have an impact on their emotional and physical health, social development, education and future employment.



DARLINGTON
Borough Council

Children's Social Care Performance & Practise Report

Year End 2021-22 (April 2021 to March 2022)

Scrutiny

Scrutiny

2021-22 Performance Summary

Referral: 72.1% of the referrals completed were finalised within 1 working day. This is a decrease when compared with 77.7% of referrals completed within 1 working day in 2020/21 however, that was with 25.9% less referrals to process.

4.7% of the referrals took over 3 working days to be completed in 2021/22 which is positively just below our target of 5%.

Re-Referrals: Re-referrals continue to remain low with 10.5% of the children having a further referral within 12 months. This is below the internal target of 18%, our statistical neighbour (22.9%), regional (21.6%) and national average (22.7%) (LAIT 2021).

Building Stronger Families: 839 Early Help Assessments (EHA) were started in 2021/22, 19.2% of which were initiated by external agencies.

Missing: 31 Children in Care (CiC) were reported missing in 2021/22 with a total of 253 episodes. Where children are looked after by other local authorities but residing in Darlington, the ERASE Team have been alerted and provided with relevant information to ensure that the young people have been appropriately placed.

Children & Families Assessments: 806 Children & Families (C&F) assessments were completed in 2021/22 with a 357.8 rate per 10,000 population.

C&F Timeliness: Social workers completed 84.5% of the C&F assessments within timescale in 2021/22.

Section 47 enquiries: At the end of 2021/22 the rate for a section 47 enquiry being started was 280.1 per 10,000 population with 631 enquiries.

Child Protection Conference Timeliness: 79.3% of Initial Child Protection Conferences (ICPC) were held within 15 working days from the strategy meeting / section 47 being initiated, excluding transfer-in conferences, in 2021/22.

Child Protection Plans: 120 children were subject to a Child Protection plan (CP) as at the end of March 2022. This is an increase on the 87 children who were subject to CP at the end of March 2021. Although Darlington's rate per 10,000 population for children subject to a CPP has increased to 53.3, this is still below our statistical neighbours (55.8) and regional (67.2) rate as reported in the 2021 LAIT.

100.0% of CP cases were allocated to a social worker and all the CP reviews were carried out in timescale. In 2021/22 there was no child ceasing CP who had been subject to the plan for 2 or more years. At the end of March 2022, the percentage of children becoming subject to a CP plan for a second or subsequent time within 2 years of the previous plan ending was 7.1%.

Child Protection Statutory visits: 82.9% of children received a statutory Child Protection (CP) visit in 2021/22 within 10 working days.

Children in Care: 273 children were in care as of March 2022, 1.1% of which are unaccompanied asylum-seekers. During 2021/22 a total of 100 children came into the care of the DBC and a total of 99 children ceased to be in care.

Children in Care Reviews: 100.0% of Children in Care (CiC) were allocated to a qualified social worker. 98.8% of the reviews have been completed within required timescales in 2021/22.

Children in Care Statutory visits: 90.1% of statutory visits for Children in Care (CiC) were completed in timescale in 2021/22. This is in line with our internal target of 90%.

Children in Care Placements: 10.6% of Children in Care (CiC), as of March 2022, have had 3 or more placements within the previous 12 months. This is at the internal target of 10%. 74.0% of our Children in Care aged under 16 (who have been looked after for at least 2.5 years) have been in their current placement continuously for at least 2 years. This is positively above our target of 68.0%. 6.6% of our Children in Care have been placed 20 or more miles away from home as of March 2022, which is positively below our target of 10.0%. This relates to young people whose placement is appropriate for enabling them to have the best support either with family links or specialised care and this provision was not available within 20 miles.

Page 17

Initial Health Assessments: 82.1% of children newly in care were seen by CDDFT within their timescale of 20 days in 2021/22.

Health and Dental Reviews: 90.5% of children due a review health assessment by March 2022 have had one completed. 83.7% of Children in Care, that were due a dental check assessment by March 2022 have had one completed.

Care leavers: 100.0% of care leavers were in suitable accommodation at the end of March 2022. 65.4% of care leavers were in employment and 11.5% were in further education.

REFERRALS - TIMELINESS

DEFINITION Percentage of referrals completed within 1 working day and over 3 working days. Referrals completed within 1 working day indicates that decisions regarding the services required are made in a timely manner to minimise drift and delay and to ensure that children are safe.

PERFORMANCE ANALYSIS

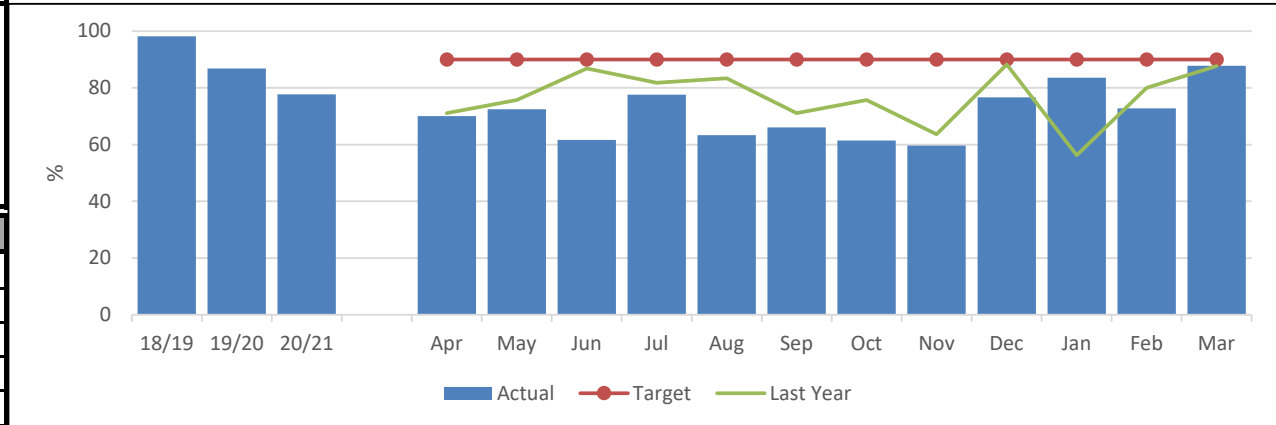
In 2021/22, 72.1% of the referrals completed were finalised within 1 working day. This is a decrease when compared with 77.7% of referrals completed within 1 working day in 2020/21 however, that was with 25.9% less referrals to process. 4.7% of the referrals took over 3 working days to be completed in 2021/22 which is positively just below our target of 5%.

All referrals that are completed out of timescale are reviewed by the service manager to ensure delay was unavoidable. No negative impacts on the families have been highlighted because of these delays.

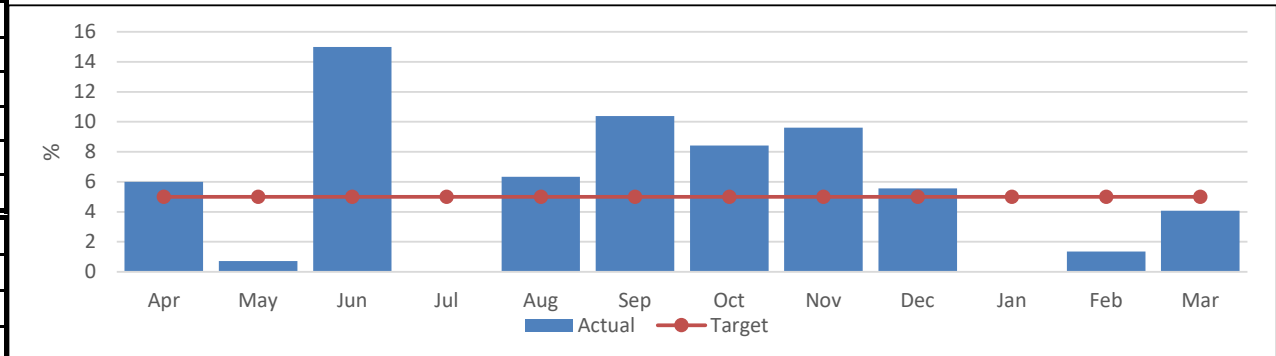
Page 18

CSC 022	CSC 026
Monthly % of referrals completed within 1 working day.	Monthly % of referrals completed in over 3 working days.

CSC 022: Monthly % of referrals completed within 1 working day.



CSC 026: Monthly % of referrals completed in over 3 working days.



IN MONTH PERFORMANCE	Target	90%	5%
	Apr-21	70.0	6.0
	May-21	72.5	0.7
	Jun-21	61.7	15.0
	Jul-21	77.6	0.0
	Aug-21	63.3	6.3
	Sep-21	66.0	10.4
	Oct-21	61.5	8.4
	Nov-21	59.6	9.6
	Dec-21	76.7	5.6
	Jan-22	83.6	0.0
	Feb-22	72.8	1.4
Mar-22	87.8	4.1	

ANNUAL TREND	2018/19	98.2	0.0
	2019/20	86.8	1.6
	2020/21	77.7	4.7
	2021/22	72.1%	5.6%

REFERRALS - RE-REFERRALS

DEFINITION Percentage of re-referrals that are received within 12 months of a previous referral (based on referral start dates)
 A re-referral to Children's Social Care could be an indication that the previous referral was inappropriately closed down without addressing the initial concerns or issues.

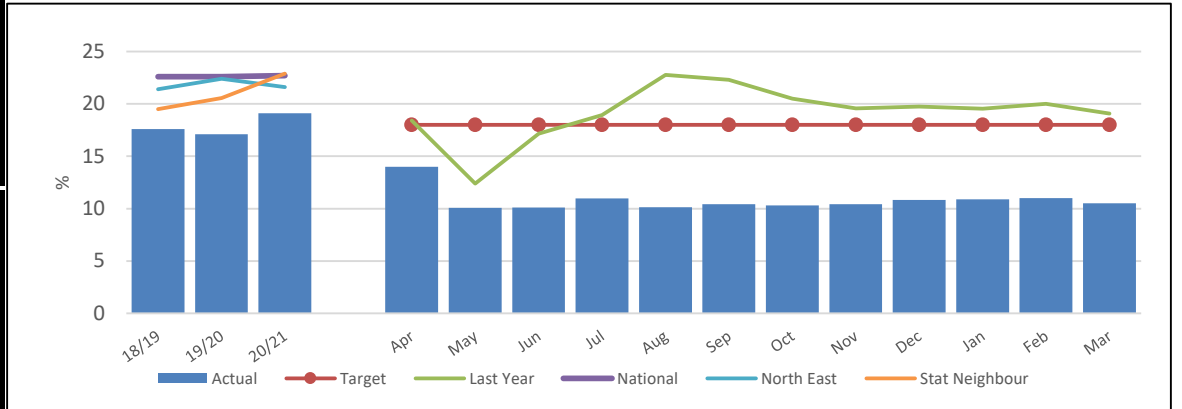
PERFORMANCE ANALYSIS Re-referrals continue to remain low in this reporting year with 10.5% of the children having a further referral within 12 months. This is below the internal target of 18%, our statistical neighbour (22.9%), regional (21.6%) and national average (22.7%) (LAIT 2021).

CSC 034	CSC 032	% of referrals that are re-referrals (monthly)
Monthly number of re-referrals that are repeat within 12 months	% re-referrals that are repeat within 12 months (cumulative)	

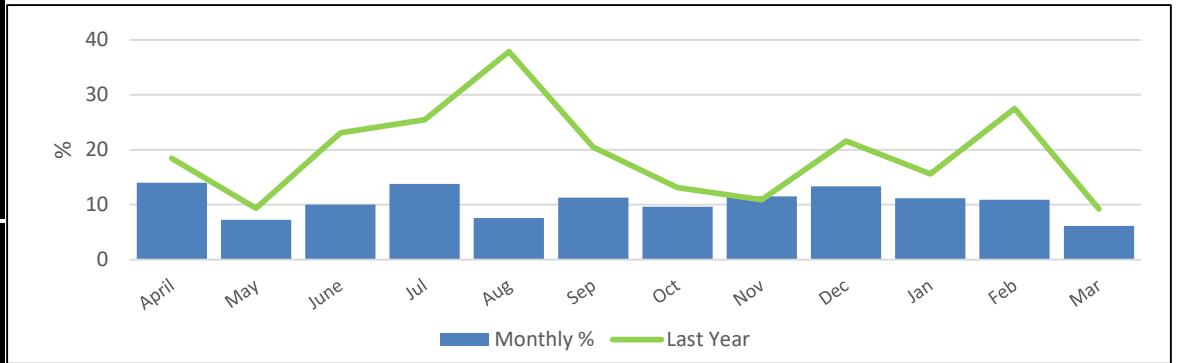
IN MONTH PERFORMANCE	Target		18%	
	Apr-21	7	14.0	14.0
	May-21	5	10.1	7.2
	Jun-21	6	10.1	10.0
	Jul-21	8	11.0	13.8
	Aug-21	6	10.1	7.6
	Sep-21	12	10.4	11.3
	Oct-21	8	10.3	9.6
	Nov-21	6	10.4	11.5
	Dec-21	12	10.8	13.3
	Jan-22	13	10.9	11.2
	Feb-22	16	11.0	10.9
	Mar-22	6	10.5	6.1

ANNUAL TREND	2018/19	205	17.6
	2019/20	171	17.1
	2020/21	143	19.1
	2021/22	105	10.5

CSC 032: % re-referrals that are repeat within 12 months (cumulative)



% of referrals that are re-referrals (monthly)



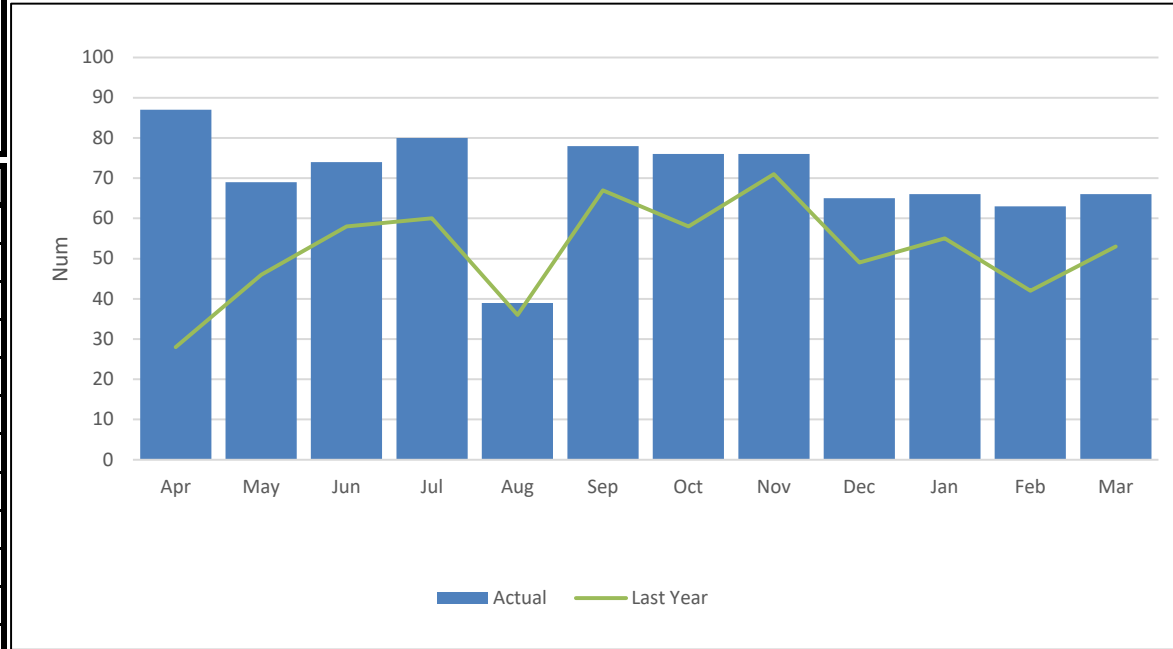
EARLY HELP ASSESSMENTS - STARTED

DEFINITION The number of individual Early Help Assessments (EHA) started in month and year to date, including those initiated by external agencies. The start date of the EHA is taken from the form created date in Liquid Logic and the start date of the external EHA is taken from the contact date when the agency informed us of the EHA.

PERFORMANCE ANALYSIS 839 Early Help Assessments (EHA) were started in 2021/22, 19.2% of which were initiated by external agencies.

CSC 002
Total number of individual EHA's started in month (inc. external)

CSC 002: Total number of individual EHA's started in month (inc. external)



IN MONTH PERFORMANCE	Target	
	Apr-21	87
	May-21	69
	Jun-21	74
	Jul-21	80
	Aug-21	39
	Sep-21	78
	Oct-21	76
	Nov-21	76
	Dec-21	65
	Jan-22	66
	Feb-22	63
	Mar-22	66

ANNUAL TREND	2018/19	869
	2019/20	893
	2020/21	623
	2021/22	839

MISSING EPISODES

DEFINITION	The number of episodes of children going missing in Darlington, who are a Child in Care.
-------------------	--

PERFORMANCE ANALYSIS	<p>31 Children in Care (CiC) were reported missing in 2021/22 with a total of 253 episodes.</p> <p>This increase in the number of missing episodes is a result of a few young people who are more frequently reported missing from placement (107 episodes in 2020/21 to 253 in 2021/22). Work continues to help them understand the balance between independence with acceptable curfew times and ensuring they are safe. This has also been the case with the increase in OLA CIC missing episodes when compared to last year (90 episodes in 2020/21 to 152 in 2021/22). Where children are looked after by other authorities but cared for in Darlington, the ERASE Team have been alerted and provided with relevant information to ensure that the young people have been appropriately placed.</p>
-----------------------------	---

CSC 246	
Number of missing relating to Children in Care with DBC	Of which are in a placement more than 20 miles from home

	Ep.	Child.	Ep.	Child.
Apr-21	8	5	1	1
May-21	15	7	1	1
Jun-21	30	10	5	1
Jul-21	16	7	1	1
Aug-21	25	6	5	1
Sep-21	24	10	5	2
Oct-21	35	8		
Nov-21	24	9		
Dec-21	14	9		
Jan-22	24	8	1	1
Feb-22	18	5	2	1
Mar-22	20	6	1	1

IN MONTH PERFORMANCE

Apr-21	8	5	1	1
May-21	15	7	1	1
Jun-21	30	10	5	1
Jul-21	16	7	1	1
Aug-21	25	6	5	1
Sep-21	24	10	5	2
Oct-21	35	8		
Nov-21	24	9		
Dec-21	14	9		
Jan-22	24	8	1	1
Feb-22	18	5	2	1
Mar-22	20	6	1	1

ANNUAL TREND child counted once	2018/19	199	36	43	10
	2019/20	129	24	32	10
	2020/21	107	30	15	4
	2021/22	253	31	22	4

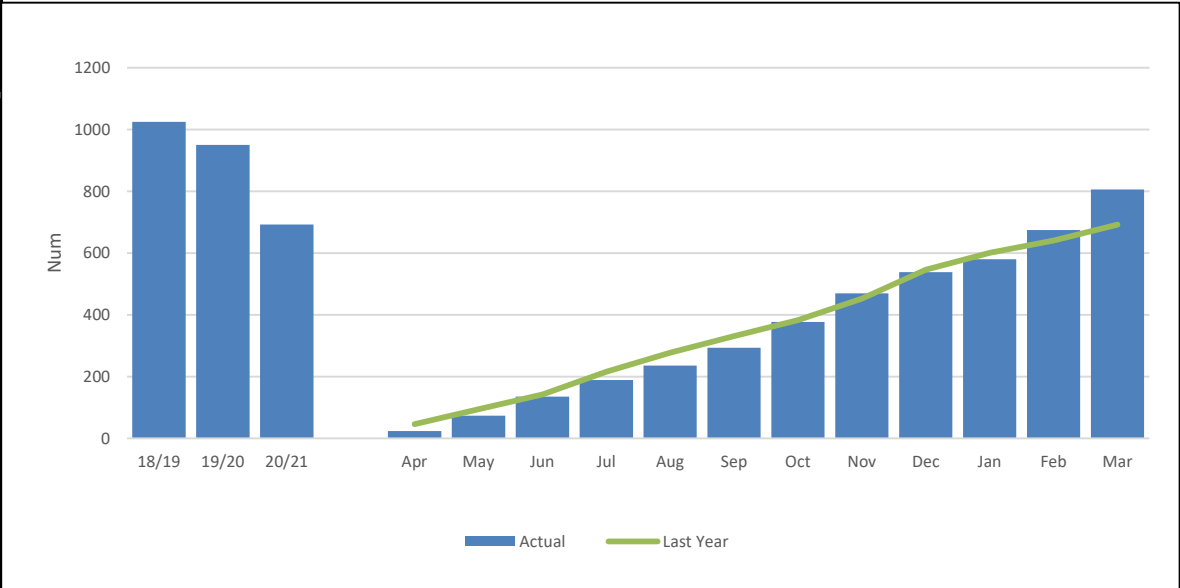
ASSESSMENTS

DEFINITION	Monthly and cumulative number of Children & Families assessments completed.
-------------------	---

PERFORMANCE ANALYSIS	806 Children & Families assessments were completed in 2021/22 with a 357.8 rate per 10,000 population. This is an increase on the 692 assessments completed in 2020/21, but a decrease when compared to the 2 years previous.
-----------------------------	---

CSC 036
Number of Children & Families assessments completed year to date

CSC 036: Number of Children & Families assessments completed year to date



IN MONTH PERFORMANCE	Apr-21	24
	May-21	73
	Jun-21	135
	Jul-21	189
	Aug-21	236
	Sep-21	293
	Oct-21	377
	Nov-21	469
	Dec-21	538
	Jan-22	580
	Feb-22	674
	Mar-22	806

ANNUAL TREND	2018/19	1,025
	2019/20	950
	2020/21	692
	2021/22	806

ASSESSMENTS - TIMELINESS

DEFINITION
 Of those assessments completed in a period, the percentage completed within 45 working days. Day zero is the first working day on or after the start date of the referral, or strategy discussion decided to initiate S47 enquiries, or where new information indicates that an assessment should be undertaken. The end date is the first working day on or after the recorded date the Team Manager closes the single assessment.
 A process indicator as a proxy measure for improved child safety and how quickly services can respond when a child is thought to be at risk of serious harm. Local authorities should investigate and address concerns in a timely and efficient way.

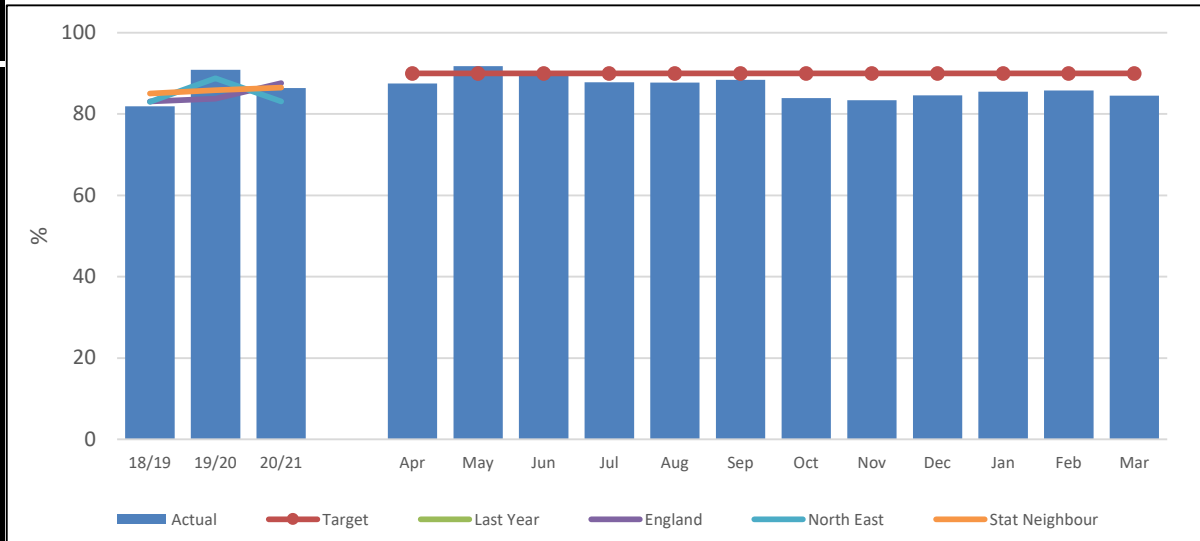
PERFORMANCE ANALYSIS
 84.5% of our C&F assessments were completed within timescale in 2021/22. This just below 2020/21 performance of 86.4% in timescale, however, this year there were 16.5% more assessments completed.

CSC 038
 % C&F Assessments completed within 45 working days (Year to date)

IN MONTH PERFORMANCE	Target	90%
	Apr-21	87.5
	May-21	91.8
	Jun-21	90.4
	Jul-21	87.8
	Aug-21	87.7
	Sep-21	88.4
	Oct-21	83.9
	Nov-21	83.4
	Dec-21	84.6
	Jan-22	85.5
	Feb-22	85.8
	Mar-22	84.5

ANNUAL TREND		
	2018/19	81.9
	2019/20	90.9
	2020/21	86.4
	2021/22	84.5

% C&F Assessments completed within 45 working days (Year to date)



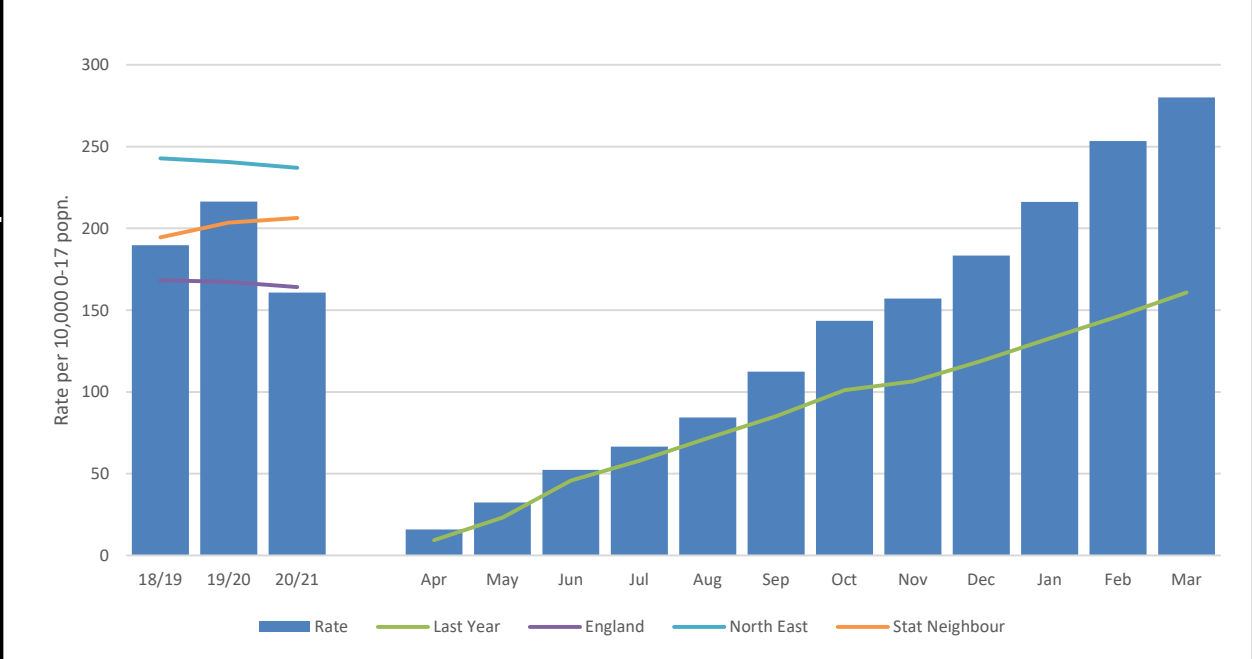
SECTION 47 - STARTED

DEFINITION	Number of children who have had a section 47 enquiries started monthly and year to date and the actual number of enquires started.
-------------------	--

PERFORMANCE ANALYSIS	At the end of 2021/22 the rate for a section 47 enquiry being started was 280.1 per 10,000 population with 631 enquiries. This is an increase on the rate in 2020/21 (160.7) and 2019/20 (216.4).
-----------------------------	---

	CSC 166	CSC 164
	All children who had a section 47 enquires started in the month	Rate of section 47 enquiries started per 10,000 of the 0-17 population (Cumulative)

Rate of section 47 enquiries started per 10,000 of the 0-17 population (inc. children already on CPP)



IN MONTH PERFORMANCE		CSC 166	CSC 164
	Apr-21	36	16.0
	May-21	37	32.4
	Jun-21	45	52.4
	Jul-21	32	66.6
	Aug-21	40	84.3
	Sep-21	63	112.3
	Oct-21	70	143.4
	Nov-21	31	157.1
	Dec-21	59	183.3
	Jan-22	74	216.2
	Feb-22	84	253.5
	Mar-22	60	280.1

ANNUAL TREND		CSC 166	CSC 164
	2018/19	426	189.7
	2019/20	486	216.4
	2020/21	361	160.7
2021/22	631	280.1	

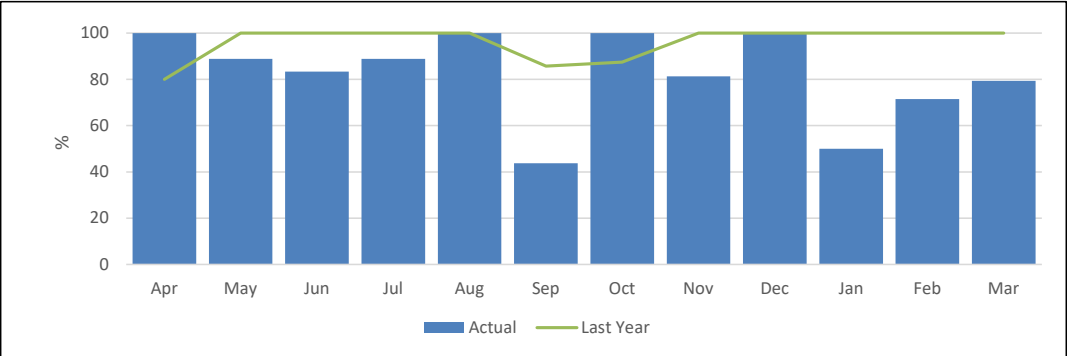
INITIAL CHILD PROTECTION CONFERENCES - TIMELINESS

DEFINITION Of those ICPC's held within the period (excluding transfer ins), the percentage held within 15 working days of the S47 enquiry. Provides an indication of how quickly the safety of children who are judged to be continuing to, or likely to suffer significant harm is being considered by a multi-agency meeting.

PERFORMANCE ANALYSIS 79.3% of the Initial Child Protection Conferences (ICPC) were held within 15 working days from the strategy meeting / section 47 being initiated, excluding transfer-in conferences in 2021/22.

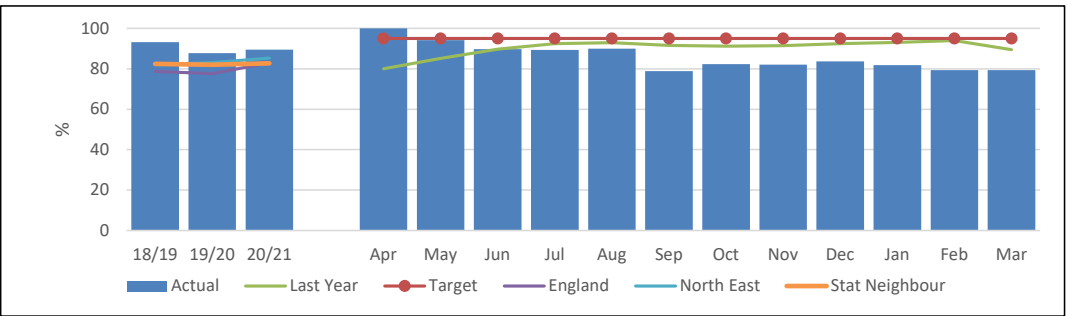
CSC 178	CSC 176
Monthly % of cases recorded in the Safeguarding Unit workbook where Child Protection strategy meeting / S47 start to initial child protection conference (ICPC) are within 15 days (CPP). Excludes transfer-in conferences.	% of cases where the initial child protection conference (ICPC) was within 15 days of the initiating strategy discussion / S47 start recorded in the Safeguarding Unit workbook (CPP). This EXCLUDES transfer-in conferences. Year to Date

CSC 178: Monthly % of cases recorded in the Safeguarding Unit workbook where Child Protection strategy meeting / S47 start to initial child protection conference (ICPC) are within 15 days (CPP). Excludes transfer-in conferences.



IN MONTH PERFORMANCE	Target	CSC 178	CSC 176
	Apr-21	100	100.0
May-21	100	88.9	94.1
Jun-21	100	83.3	89.7
Jul-21	100	88.9	89.4
Aug-21	100	100.0	90.0
Sep-21	100	43.8	78.8
Oct-21	100	100.0	82.3
Nov-21	100	81.3	82.1
Dec-21	100	100.0	83.7
Jan-22	100	50.0	81.8
Feb-22	100	71.4	79.3
Mar-22	100	79.3	79.3

CSC 176: % of cases where the initial child protection conference (ICPC) was within 15 days of the initiating strategy discussion / S47 start recorded in the Safeguarding Unit workbook (CPP). This EXCLUDES transfer-in conferences. Year to Date



ANNUAL TREND	2018/19	CSC 178	CSC 176
	2019/20	89.5	87.7
2020/21	94.4	89.5	
2021/22	79.3	79.3	

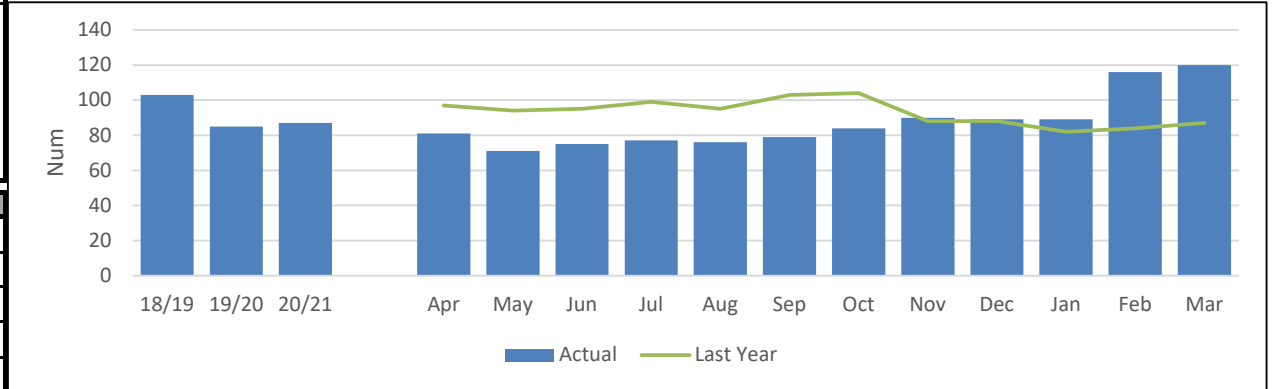
CHILD PROTECTION

DEFINITION Number of children subject to a Child Protection plan at the end of the month.

PERFORMANCE ANALYSIS 120 children were subject to a Child Protection plan (CP) as at the end of March 2022. This is an increase on the 87 children who were subject to CP at the end of March 2021. Although Darlington's rate per 10,000 population for children subject to a CPP has increased to 53.3, this is still below our statistical neighbours (55.8) and regional (67.2) rate as reported in the 2021 LAIT.

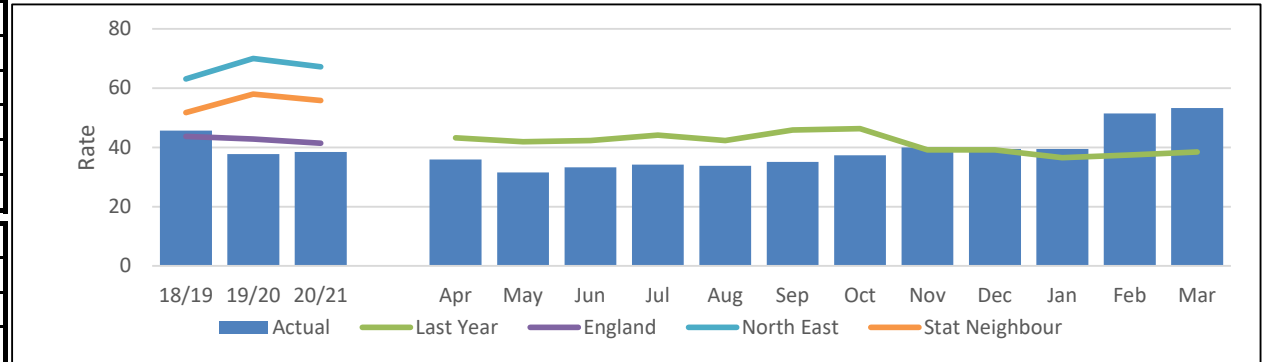
CSC 182	CSC 181
Number of children subject to a child protection plan	Rate of children subject to a Child Protection Plan per 10,000 population

CSC 182: Number of children subject to a child protection plan



IN MONTH PERFORMANCE	CSC 182	CSC 181
Apr-21	81	36.0
May-21	71	31.5
Jun-21	75	33.3
Jul-21	77	34.2
Aug-21	76	33.7
Sep-21	79	35.1
Oct-21	84	37.3
Nov-21	90	40.0
Dec-21	89	39.5
Jan-22	89	39.5
Feb-22	116	51.5
Mar-22	120	53.3

CSC 181: Rate of children subject to a Child Protection Plan per 10,000 population

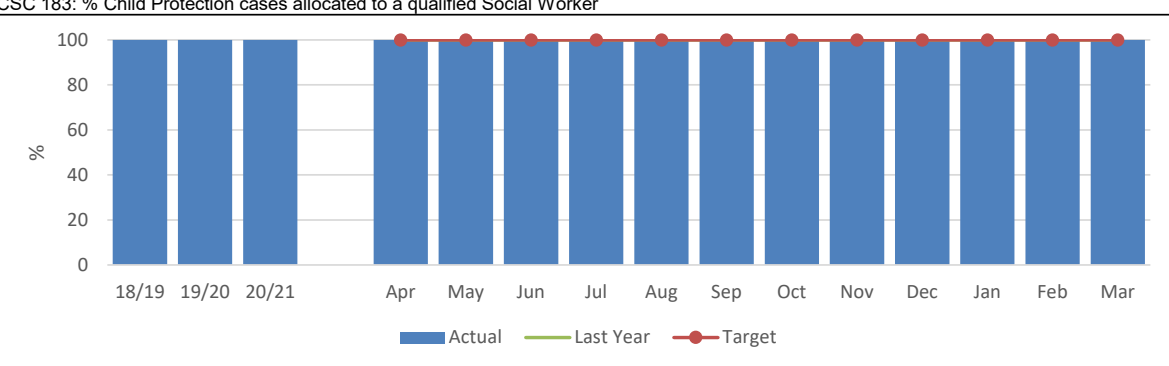
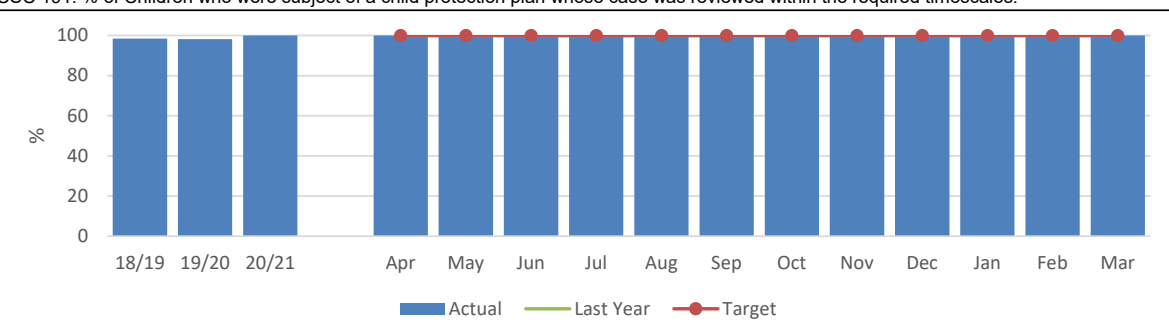


ANNUAL TREND	CSC 182	CSC 181
2018/19	103	45.7
2019/20	85	37.7
2020/21	87	38.4
2021/22	120	53.3

CHILD PROTECTION - ALLOCATION & REVIEWS

DEFINITION	<p>The percentage of children subject to a Child Protection Plan at the end of the month and who at that date had had a Plan continuously for at least the previous 3 months, whose case was reviewed within the required timescales.</p> <p>Reviews are a key element in delivering Child Protection Plans and effective reviews should ensure the provision of good quality interventions. This indicator is a proxy for the measurement of effectiveness of the interventions provided to children subject to a Child Protection Plan. "Working Together to Safeguard Children" guidance requires that the first review should be within 3 months of the initial child protection conference and thereafter at intervals of no more than 6 months.</p>
PERFORMANCE ANALYSIS	<p>100% of Child Protection Cases were allocated to a qualified social worker.</p> <p>100% of Child Protection reviews have been completed within the required timescales.</p> <p>Performance remains higher than statistical neighbours (91.8%), regional (91.0%) and national averages (93.2%) as reported in the 2021 LAIT.</p>

Page 27

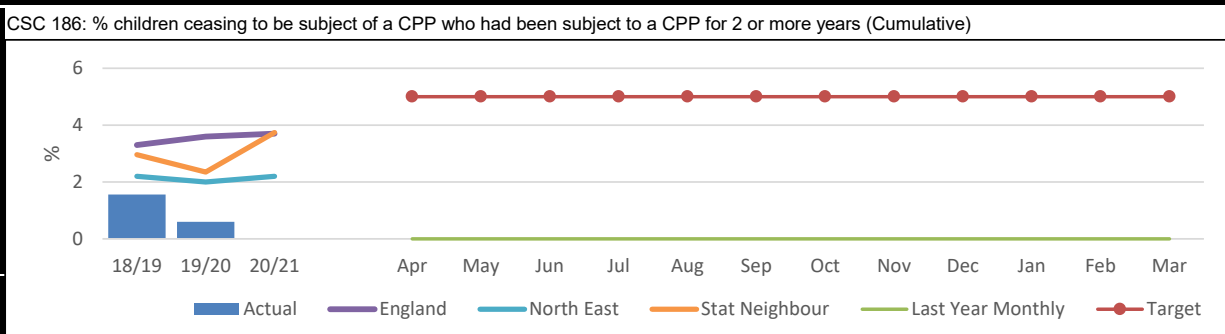
		CSC 183	CSC 191	
		% Child Protection cases allocated to a qualified Social Worker	% of Children who were subject of a child protection plan whose case was reviewed within the required timescales.	
IN MONTH PERFORMANCE	Target	100	100	
	Apr-21	100.0	100.0	<p>CSC 183: % Child Protection cases allocated to a qualified Social Worker</p> 
	May-21	100.0	100.0	
	Jun-21	100.0	100.0	
	Jul-21	100.0	100.0	
	Aug-21	100.0	100.0	
	Sep-21	100.0	100.0	
	Oct-21	100.0	100.0	
	Nov-21	100.0	100.0	
	Dec-21	100.0	100.0	
	Jan-22	100.0	100.0	
	Feb-22	100.0	100.0	
Mar-22	100.0	100.0		
ANNUAL TREND	2018/19	100.0	98.4	<p>CSC 191: % of Children who were subject of a child protection plan whose case was reviewed within the required timescales.</p> 
	2019/20	100.0	98.2	
	2020/21	100.0	100.0	
	2021/22	100.0	100.0	

CHILD PROTECTION - TIME PERIODS

DEFINITION
 Percentage of children ceasing to be subject to a Child Protection Plan who had been subject to a Plan for 2 or more years, and percentage of children becoming subject to a Child Protection Plan for the 2nd or subsequent time within a) 2 years of a previous plan, and b) with a previous plan at any point.
 These indicators reflect the underlying principle that professionals should be working towards specified outcomes which, if implemented effectively, should lead to all children not needing to be the subject of a Child Protection Plan within a maximum of two years, or becoming subject of a Child Protection Plan for a second or subsequent time.

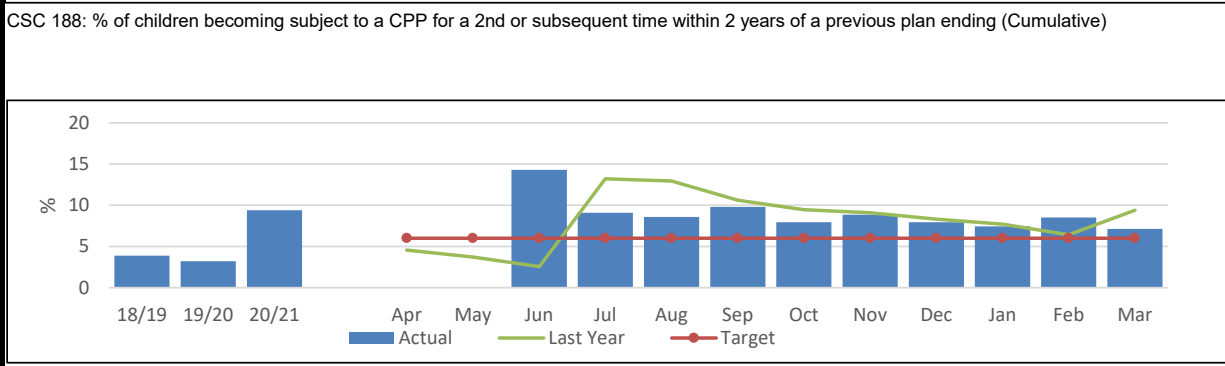
PERFORMANCE ANALYSIS
 7.1% of the children became subject to a CP plan for a second or subsequent time within 2 years of the previous plan ending. This is above our target of 6% but a positive decrease when compared to the percentage at March 2021 (9.4%).
 No child has ceased to be subject to a CP plan who had been subject to the plan for 2 or more years and we continue to remain below our target of 5%.

CSC 186	CSC 188
% children ceasing to be subject of a CPP who had been subject to a CPP for 2 or more years (Cumulative)	% of children becoming subject to a CPP for a 2nd or subsequent time within 2 years of a previous plan ending (Cumulative)



IN MONTH PERFORMANCE

Target	5%	6%
Apr-21	0.0	0.0
May-21	0.0	0.0
Jun-21	0.0	14.3
Jul-21	0.0	9.1
Aug-21	0.0	8.6
Sep-21	0.0	9.8
Oct-21	0.0	7.9
Nov-21	0.0	8.9
Dec-21	0.0	8.0
Jan-22	0.0	7.5
Feb-22	0.0	8.5
Mar-22	0.0	7.1



ANNUAL TREND

2018/19	1.6	3.9
2019/20	0.6	3.2
2020/21	0.0	9.4
2021/22	0.0	7.1

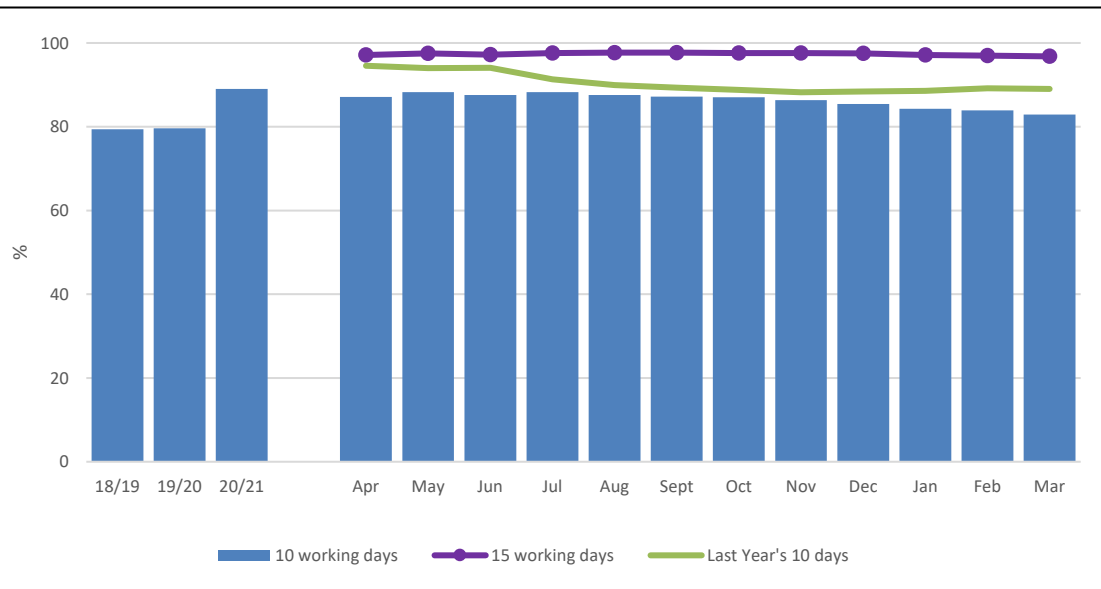
CHILD PROTECTION - STATUTORY VISITS

DEFINITION Percentage of children subject to a Child Protection Plan who had all statutory visits carried out within timescales and percentage of Child Protection statutory visits completed within timescale monthly and year to date.

PERFORMANCE ANALYSIS 82.9% of Child Protection statutory visits were completed within 10 working days in 2021/22 and 96.8% of the visits were completed within 15 working days.

CSC 252b	
% Child Protection statutory visits completed within 10 working days year to date (cumulative)	% Child Protection statutory visits completed within 15 working days year to date (cumulative)

% Child Protection statutory visits completed year to date



IN MONTH PERFORMANCE	Target	90	90	
	Apr-21		87.1	97.1
	May-21		88.3	97.5
	Jun-21		87.5	97.2
	Jul-21		88.3	97.6
	Aug-21		87.6	97.7
	Sep-21		87.2	97.7
	Oct-21		87.0	97.6
	Nov-21		86.4	97.6
	Dec-21		85.4	97.5
	Jan-22		84.3	97.1
	Feb-22		83.9	97.0
Mar-22		82.9	96.8	

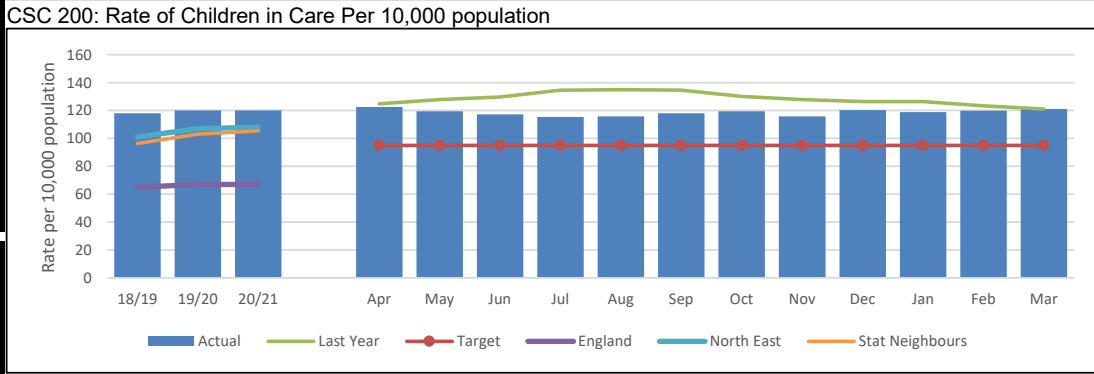
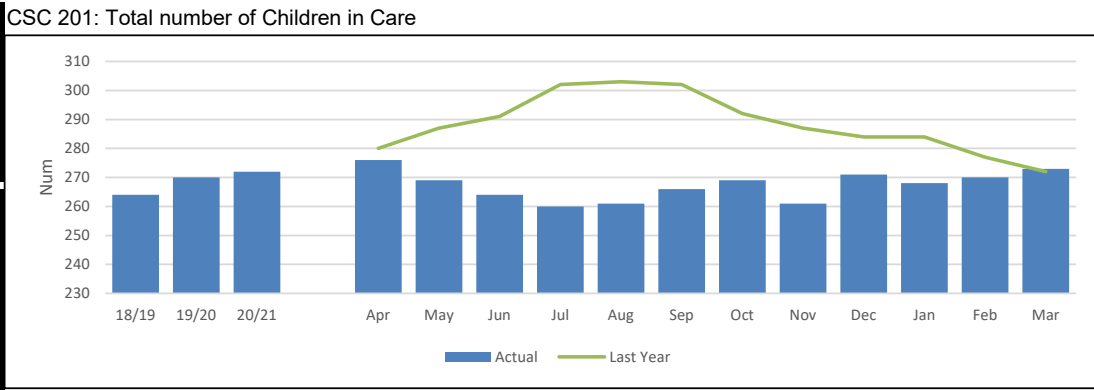
ANNUAL TREND	2018/19	79.3	95.7
	2019/20	79.6	93.8
	2020/21	89.0	98.4
	2021/22	82.9	96.8

CHILDREN IN CARE

DEFINITION Number of Children in Care at the end of each month and of which are Unaccompanied Asylum Seeking Child (UASC).

PERFORMANCE ANALYSIS 273 children were in care as at March 2022, 1.1% of which are unaccompanied asylum-seekers. The rate of children in care per ten thousand population is similar to that at March 2021, but has been consistently lower each month when compared to 2020/21.

	CSC 201		CSC 200	
	Total number of Children in Care	% of which are identified as a UASC	Rate of Children in Care Per 10,000 population	
IN MONTH PERFORMANCE	Target			95
	Apr-21	276	0.7%	122.5
	May-21	269	0.7%	119.4
	Jun-21	264	0.8%	117.2
	Jul-21	260	0.8%	115.4
	Aug-21	261	0.8%	115.9
	Sep-21	266	0.8%	118.1
	Oct-21	269	0.7%	119.4
	Nov-21	261	0.8%	115.9
	Dec-21	271	0.7%	120.3
	Jan-22	268	1.1%	119.0
	Feb-22	270	1.1%	119.9
	Mar-22	273	1.1%	121.2
ANNUAL TREND	2018/19	264		118.0
	2019/20	270		120.0
	2020/21	272	0.7%	121.1
	2021/22	273	1.1%	121.2



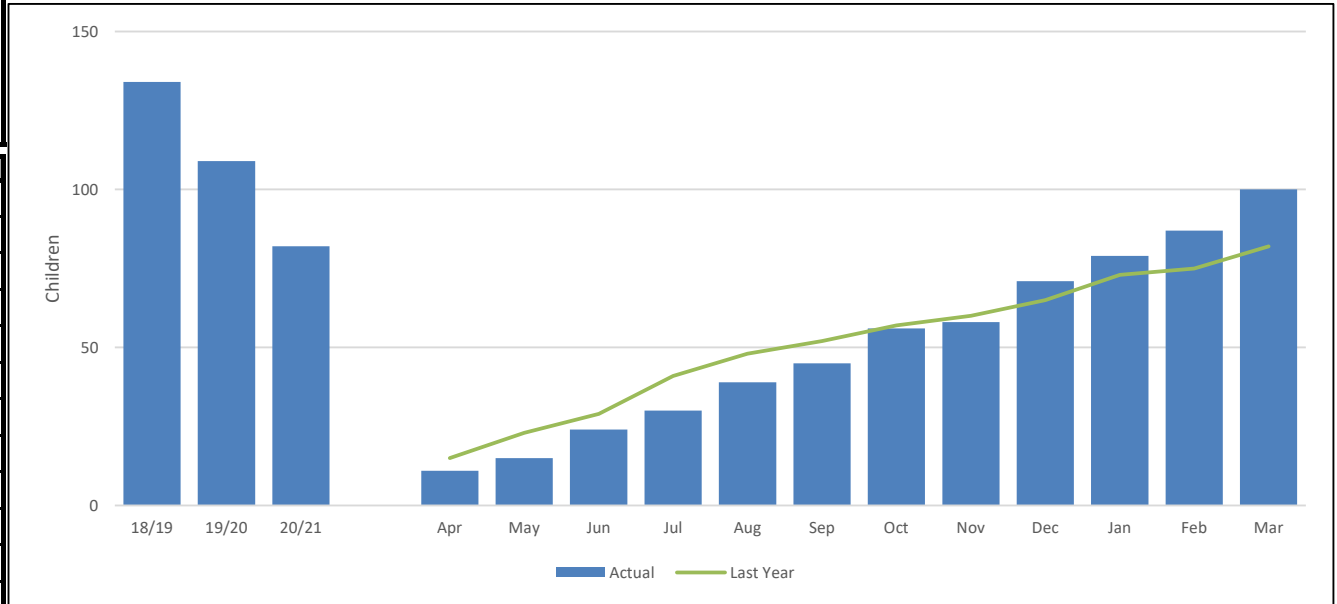
CHILDREN IN CARE - COMING INTO CARE

DEFINITION Number of children coming into the care of the local authority during the month and year to date and where they are an unaccompanied asylum seeking child (UASC). This is further broken down to show their first placement type.

PERFORMANCE ANALYSIS 100 children from 70 families came into care in 2021/22. This an increase when compared with the 82 children who came into care in 2020/21, but a decrease from 2019/20 (109 children) and 2018/19 (134 children). 2.0% of the young people coming into care during 2021/22 were accepted from the home officer as UASC (Unaccompanied Asylum-Seeking Child).

CSC 209	CSC 208
Monthly number of new cases of children coming into care	Total number of new cases of children coming into care within the year

Total number of new cases of children coming into care within the year



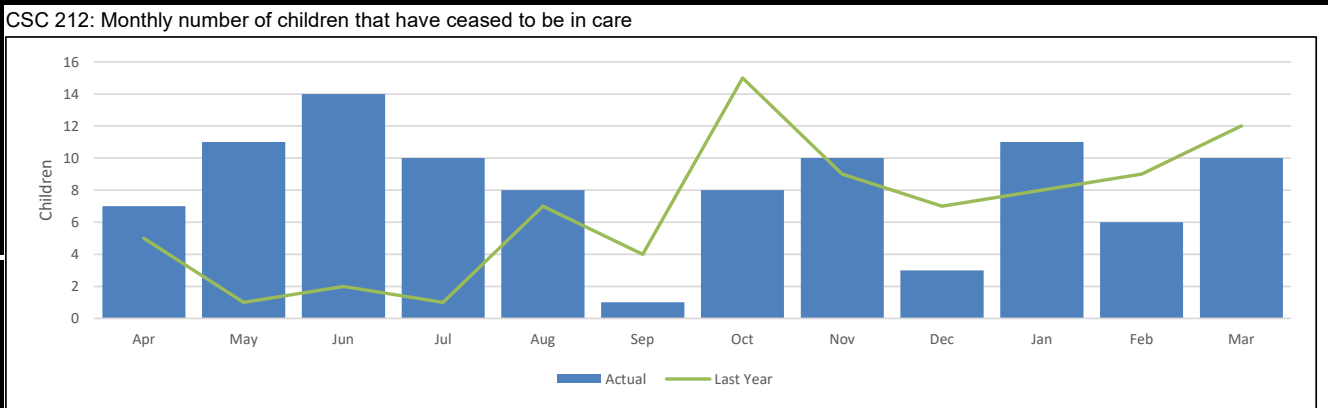
IN MONTH PERFORMANCE		CSC 209	CSC 208
	Apr-21	11	11
	May-21	4	15
	Jun-21	9	24
	Jul-21	6	30
	Aug-21	9	39
	Sep-21	6	45
	Oct-21	11	56
	Nov-21	2	58
	Dec-21	13	71
	Jan-22	8	79
	Feb-22	8	87
Mar-22	13	100	
ANNUAL TREND	2018/19	134	134
	2019/20	109	109
	2020/21	82	82
	2021/22	100	100

CHILDREN IN CARE - CEASING CARE

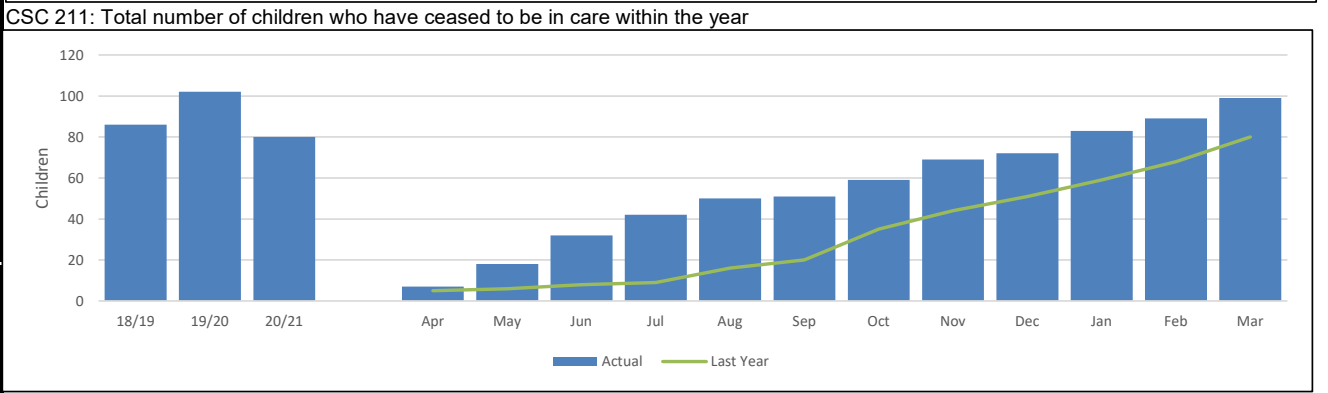
DEFINITION	Number of children ceasing to be a Child in Care during each month and year to date and their destination when they ceased being in care.
-------------------	---

PERFORMANCE ANALYSIS	<p>99 children and young people ceased to be in care in 2021/22. This is an increase when compared with the 80 children who ceased in 2020/21, a small decrease from 2019/20 (102 children) and an increase on 2018/19 (86 children).</p> <p>Of the children and young people who did cease CiC:</p> <ul style="list-style-type: none"> • 34.3% had a Special Guardianship Order (SGO) / Child Arrangement Order (CAO) granted to a relative. • 28.3% returned home to their parent. • 19.2% due to turning 18 and becoming a care leaver. • 15.2% were adopted. • 3.0% for other reasons. <p>The proportion of children who either returned home to their parent or had an SGO/CAO granted, is similar to that in 2020/21.</p>
-----------------------------	--

	CSC 212	CSC 211
	Monthly number of children that have ceased to be in care	Total number of children who have ceased to be in care within the year



IN MONTH PERFORMANCE	Apr-21	7	7
	May-21	11	18
	Jun-21	14	32
	Jul-21	10	42
	Aug-21	8	50
	Sep-21	1	51
	Oct-21	8	59
	Nov-21	10	69
	Dec-21	3	72
	Jan-22	11	83
	Feb-22	6	89
	Mar-22	10	99



ANNUAL TREND	2018/19	86	86
	2019/20	102	102
	2020/21	80	80
	2021/22	99	99

CHILDREN IN CARE - ALLOCATION & REVIEWS

DEFINITION

The percentage of Children in Care cases which should have been reviewed during the year ending 31 March that were reviewed on time during the year and the percentage of Children in Care cases that were allocated to a qualified Social Worker at the end of the month.

To improve compliance with local authorities' legal requirements under the Review of Children's cases Regulations 1991. The purpose of the review is to consider the plan for the child's welfare, to monitor the progress of the plan and amend it as necessary in light of changed information and circumstances. The statutory intervals are within 20 working days of placement, then within 3 months and 6 monthly thereafter, but reviews may be rescheduled or held inside these intervals if there are significant changes to the child's care plan.

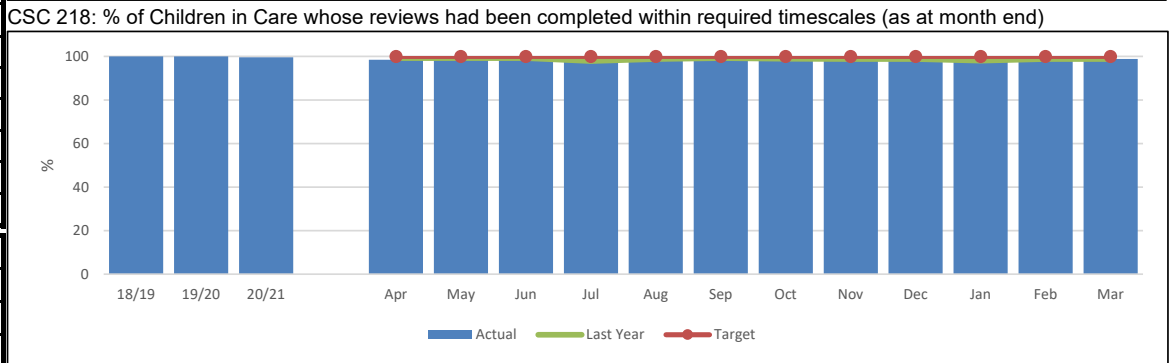
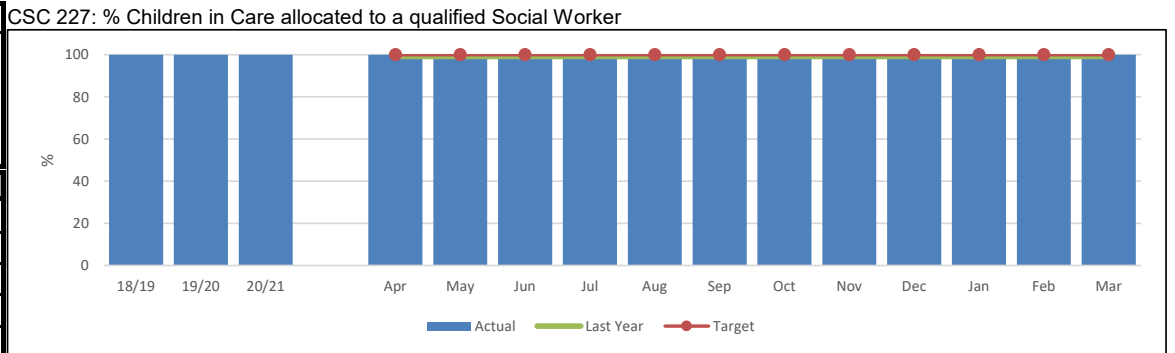
PERFORMANCE ANALYSIS

100% of Children in Care (CiC) are allocated to a qualified social worker.

98.8% of the reviews have been completed within required timescales.

Page 33

		CSC 227	CSC 218
		% Children in Care allocated to a qualified Social Worker	% of Children in Care whose reviews had been completed within required timescales (as at month end)
IN MONTH PERFORMANCE	Target	100	100
	Apr-21	100.0	98.5
	May-21	100.0	99.2
	Jun-21	100.0	99.3
	Jul-21	100.0	98.1
	Aug-21	100.0	98.3
	Sep-21	100.0	98.4
	Oct-21	100.0	98.4
	Nov-21	100.0	98.4
	Dec-21	100.0	98.4
	Jan-22	100.0	98.4
	Feb-22	100.0	98.8
	Mar-22	100.0	98.8
ANNUAL TREND	2018/19	100.0	100.0
	2019/20	100.0	100.0
	2020/21	100.0	99.6
	2021/22	100.0	98.8



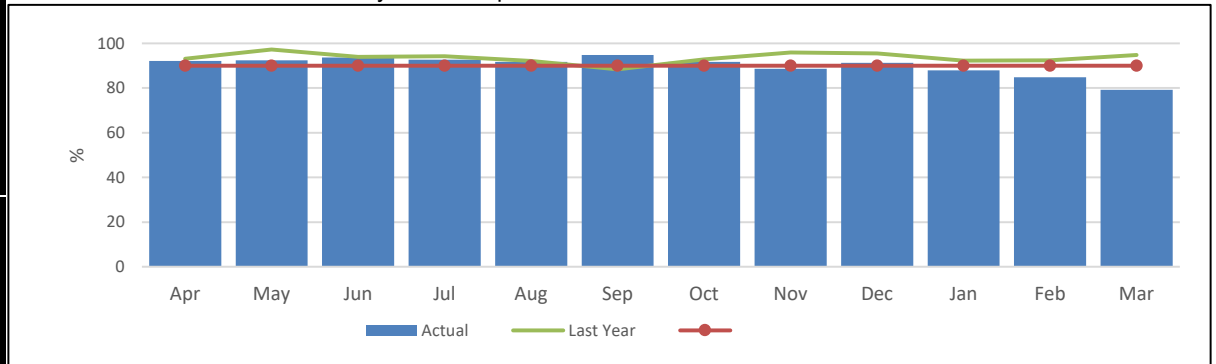
CHILDREN IN CARE - STATUTORY VISITS

DEFINITION Percentage of Children in Care who had all statutory visits completed within required timescales and percentage of Children in Care's statutory visits completed within timescales each month and year to date.

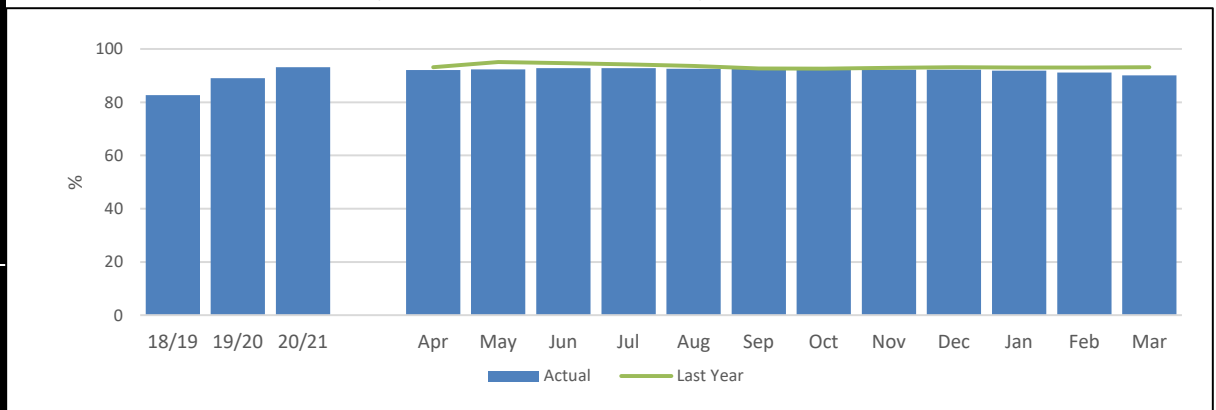
PERFORMANCE ANALYSIS 90.1% of statutory visits for Children in Care (CiC) were completed in timescale in 2021/22. This is a small decrease compared with 2020/21 when there were 93.1% of visits completed in timescale.

CSC 260a	CSC 260b
% Child in Care statutory visits completed in timescale within the month	% Child in Care statutory visits completed in timescale year to date

CSC 260a: % Child in Care statutory visits completed in timescale within the month



CSC 260b: % Child in Care statutory visits completed in timescale year to date



IN MONTH PERFORMANCE	Target	90	90
	Apr-21	92.1	92.1
	May-21	92.5	92.3
	Jun-21	93.7	92.8
	Jul-21	92.7	92.8
	Aug-21	91.7	92.6
	Sep-21	94.8	92.9
	Oct-21	91.7	92.7
	Nov-21	88.6	92.2
	Dec-21	91.3	92.2
	Jan-22	87.9	91.8
	Feb-22	84.9	91.1
	Mar-22	79.3	90.1

ANNUAL TREND	2018/19	82.6	82.6
	2019/20	89.0	89.0
	2020/21	93.1	93.1
	2021/22	79.3	90.1

CHILDREN IN CARE - PLACEMENTS

DEFINITION

Of those Children in Care at the point in time (excluding series of short-term placements), the percentage that had 3 or more separate placements in the previous 12 months; who had been in their current placement for 2 or more years. and who were placed more than 20 miles away from their home address.

On the whole stability is associated with better outcomes; placement instability has been highlighted as a key barrier to improving educational outcomes. Proper assessment and an adequate choice of placements to meet the varied needs of different children are essential if appropriate stable placements are to be made. Inappropriate placements often break down and lead to frequent moves. Nevertheless, the circumstances of some individual children will require 3 or more separate placements during a year if they and others are to be kept safe.

PERFORMANCE ANALYSIS

10.6% of Children in Care, as at March 2022, have had 3 or more placements within the previous 12 months. This is in line with our internal target (10.0%), and above the 8.0% as at March 2021.

Currently, 74.0% of our Children in Care aged under 16 (who have been looked after for at least 2.5 years) have been in their current placement continuously for at least 2 years. This percentage is positively higher when compared with March 2021 (72.0%) and our 68% target.

6.6% of our Children in Care have been placed 20 or more miles away from home as at March 2022. This is positively below target of 10% and nearly half that of March 2021 (12.0%). All these placements have been confirmed by team managers to be appropriate for the child enabling them to have the best support either with family links or specialised care.

Page 35

	CSC 228	CSC 229	CSC 230
	% Children in Care with 3 or more placements moves during last 12 months	% Children in Care who have been in their current placement for 2 or more years	% Children in Care placed 20 miles or more away from home

IN MONTH PERFORMANCE	Target	10%	68%	10%
	Apr-21	8.7	70.9	7.8
	May-21	9.3	73.0	8.0
	Jun-21	9.9	69.1	8.8
	Jul-21	9.6	72.9	9.2
	Aug-21	10.3	73.5	8.9
	Sep-21	9.8	69.8	8.3
	Oct-21	8.9	75.2	7.4
	Nov-21	8.8	72.7	8.0
	Dec-21	10.0	73.5	6.1
	Jan-22	9.0	75.4	6.3
	Feb-22	10.4	76.3	7.0
Mar-22	10.6	74.0	6.6	

ANNUAL TREND	2018/19	8.0	64.4	11.0
	2019/20	11.0	70.0	11.0
2020/21	8.0	72.0	12.0	
2021/22	10.6	74.0	6.6	

CSC 228: % Children in Care with 3 or more placements moves during last 12 months

CSC 229: % Children in Care who have been in their current placement for 2 or more years

CSC 230: % Children in Care placed 20 miles or more away from home

CHILDREN IN CARE - INITIAL HEALTH ASSESSMENTS

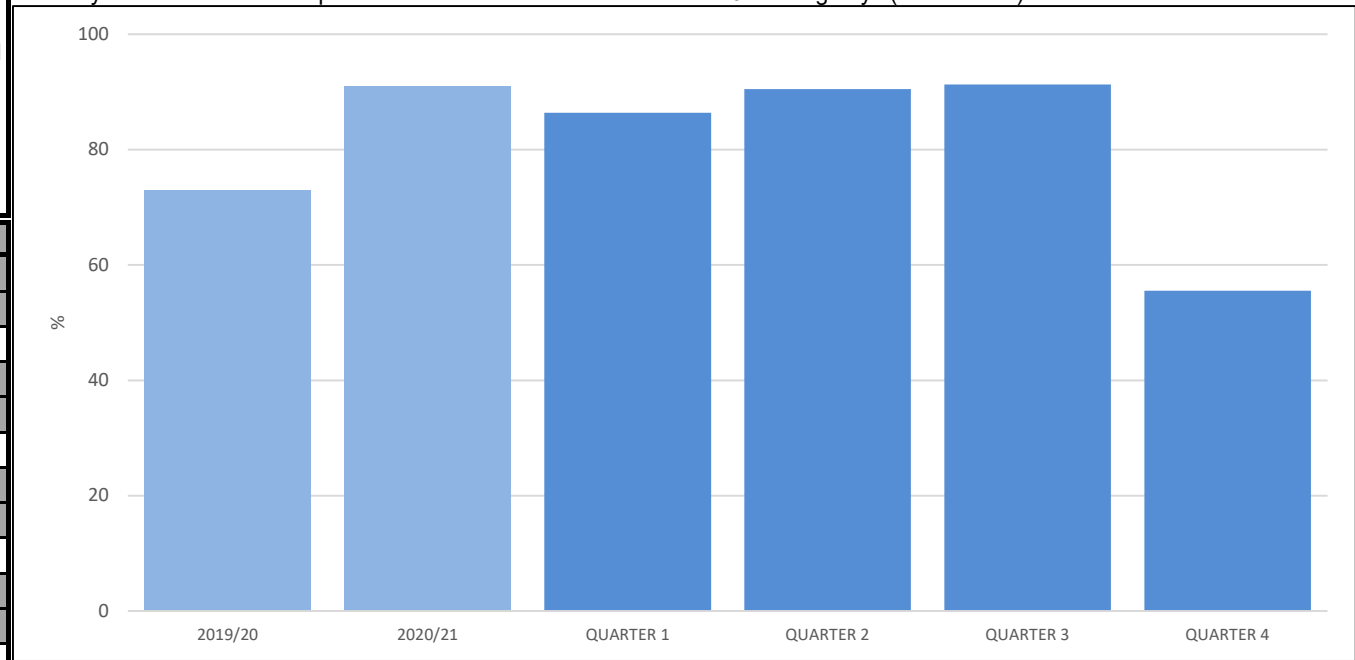
DEFINITION	Percentage of Initial Health Assessments completed within 20 working days of a child coming into our care year to date (data from Health), and percentage of IHA forms returned to Health within 7 working days.
-------------------	--

PERFORMANCE ANALYSIS	The CDDFT saw 82.1% of children within 20 days for their health appointment in 2021/22. Of note is that 44.4% of the children, during Q4, were unable to be seen during the 20 day timescale due to availability of the appointments.
-----------------------------	---

Page 36

% Newly in to care with a completed Initial Health Assessment within 20 working days (from Health)

% Newly in to care with a completed Initial Health Assessment within 20 working days (from Health)



IN MONTH PERFORMANCE	Target	95
	Apr-21	
	May-21	
	Jun-21	86.4
	Jul-21	
	Aug-21	
	Sep-21	90.5
	Oct-21	
	Nov-21	
	Dec-21	91.3
	Jan-22	
	Feb-22	
Mar-22	55.6	

ANNUAL TREND	2018/19	86.2
	2019/20	72.9
	2020/21	90.9
	2021/22	82.1%

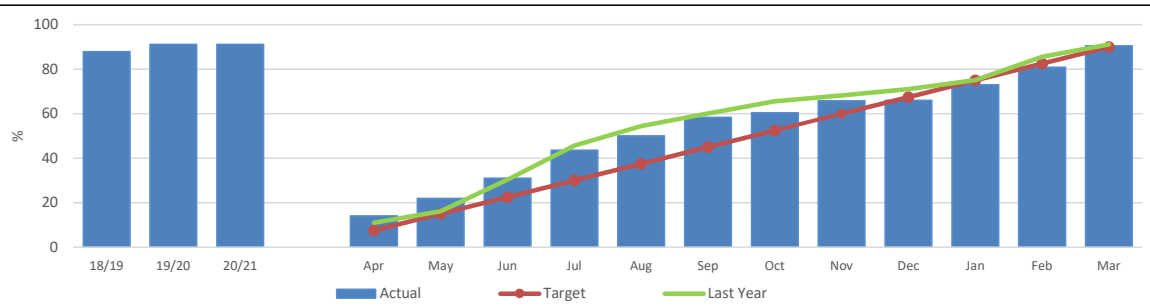
CHILDREN IN CARE - HEALTH ASSESSMENTS

DEFINITION
 Of the Children in Care (CiC) at 31 March who had been in care continuously for at least 12 months, the percentage who have had their Review Health Assessment (RHA) completed and the percentage who have an up to date Health Check.
 Children in Care share many of the same health risks and problems as their peers, but often to a greater degree. These indicators track the participation of our Children in Care's health as a proxy for monitoring the general health and wellbeing of the children, as well as providing a check on the effectiveness of joint working with Health to secure good health outcomes for Children in Care.

PERFORMANCE ANALYSIS
 90.5% of children and young people due a review health assessment by end 2021/22 have had one completed.
 Of the children and young people who did not have a health review, 3.7% of them are refusing to have one completed at this time. Although they are refusing, they are continually reminded of the benefits of having a check-up and encouraged to take part.

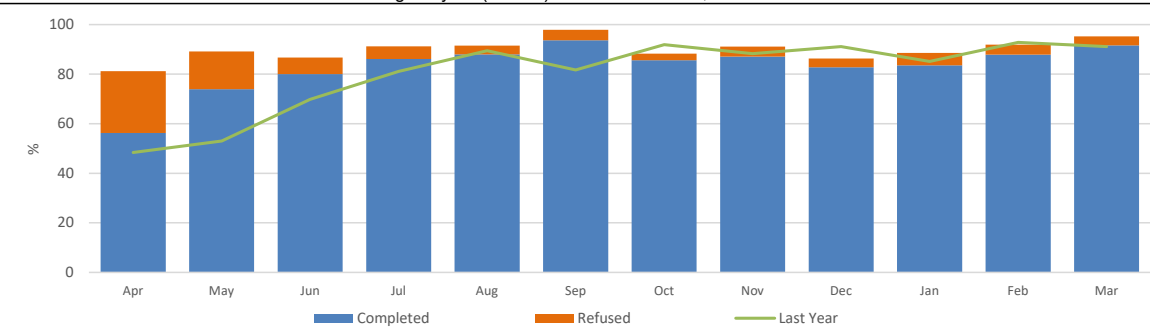
CSC 250		CSC 250b
The % of CiC who have an up to date Health Checks (excludes any who will turn 18 before 31st March)	The % of CiC who were due a Review Health Check (year to date) who refused to engage	The % of Children in Care who were due a Review Health Check year to date and were completed and recorded

CSC 250: % of CiC who are up to date for a Review Health Check at 31st March



IN MONTH PERFORMANCE	Target	90%	90%	
	Apr-21	14.1	25.0	56.3
	May-21	22.0	15.2	73.9
	Jun-21	31.0	6.7	80.0
	Jul-21	43.6	5.1	86.1
	Aug-21	50.0	3.6	88.0
	Sep-21	58.4	4.2	93.7
	Oct-21	60.4	2.7	85.6
	Nov-21	65.8	4.0	87.1
	Dec-21	66.0	3.6	82.7
	Jan-22	73.0	5.0	83.6
	Feb-22	80.9	4.0	87.9
Mar-22	90.5	3.7	91.6	

CSC 250b: % of CiC due a Review Health Check during the year (to date) that have had one, and % that refused



ANNUAL TREND	2018/19	87.9	87.9
	2019/20	91.2	3.1
	2020/21	91.2	3.7
	2021/22	90.5	3.7

CHILDREN IN CARE - DENTAL HEALTH ASSESSMENTS

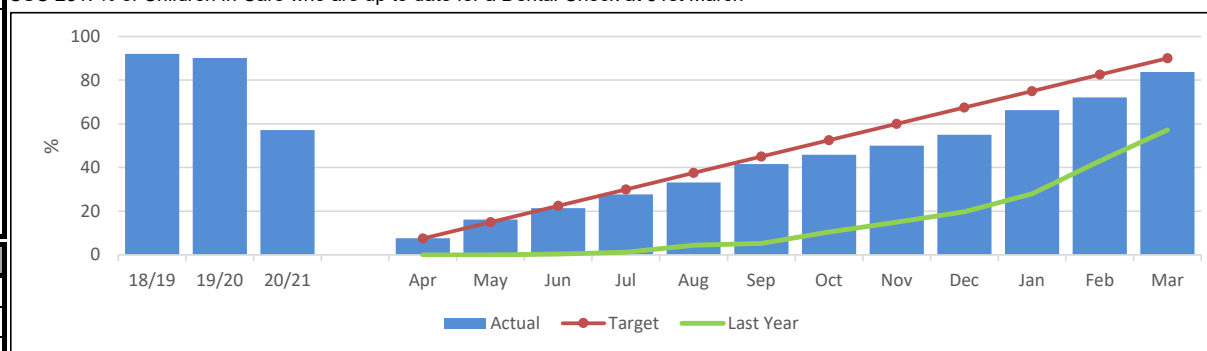
DEFINITION
 Of the Children in Care (CiC) at 31 March who had been in care continuously for at least 12 months, the percentage who had had their teeth checked by a dentist during the previous 12 months, and the percentage who had had an annual health check during the previous 12 months.
 Children in Care share many of the same health risks and problems as their peers, but often to a greater degree. These indicators track the participation of our Children in Care with dental checks as a proxy for monitoring the general health and wellbeing of the children, as well as providing a check on the effectiveness of joint working with Health to secure good health outcomes for Children in Care.

PERFORMANCE ANALYSIS
 83.7% of children and young people due a dental check assessment by end of 2021/22 have had one completed.
 Of the children and young people who did not have a dental check, 2.6% of them are refusing to have one completed at this time. Although they are refusing, they are continually reminded of the benefits of having a check-up and encouraged to take part.

Page 38

CSC 251	The % of Children in Care who were due a Dental Check (year to date) who refused to engage	CSC 251d
The % of Children in Care with up to date Dental Checks (excludes any who will turn 18 before 31st March)		The % of Children in Care who were due a Dental Check year to date and were up to date by the report date

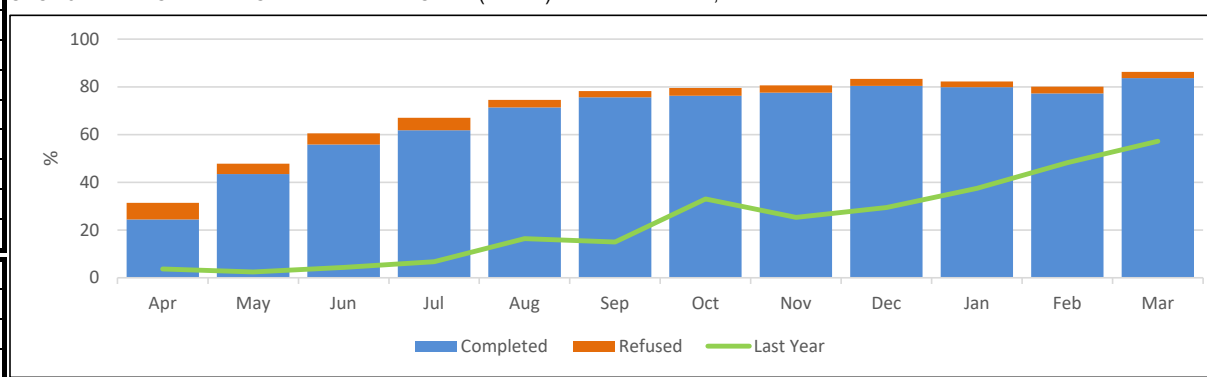
CSC 251: % of Children in Care who are up to date for a Dental Check at 31st March



IN MONTH PERFORMANCE	Target	90%	90%	
	Apr-21	7.7	7.0	24.4
	May-21	16.2	4.3	43.5
	Jun-21	21.4	4.7	55.8
	Jul-21	27.7	5.2	61.9
	Aug-21	33.2	3.1	71.4
	Sep-21	41.6	2.6	75.7
	Oct-21	45.9	3.3	76.2
	Nov-21	50.0	3.1	77.5
	Dec-21	55.0	2.9	80.4
	Jan-22	66.3	2.4	79.9
	Feb-22	72.2	2.8	77.2
	Mar-22	83.7	2.6	83.7

ANNUAL TREND	2018/19	92.1	92.1
	2019/20	90.2	3.1
	2020/21	57.2	2.8
	2021/22	83.7	2.6

CSC 251d: % of Children in Care due a Dental Check (to date) that have had one, and the % that refused



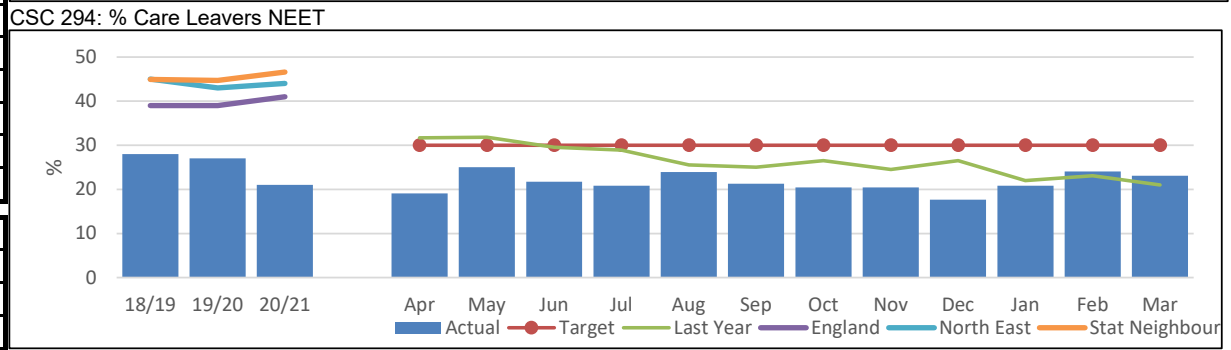
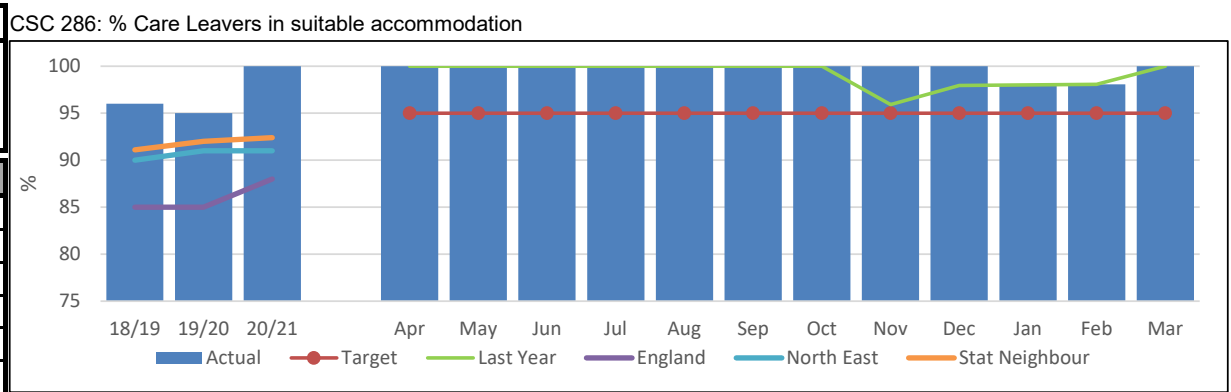
CARE LEAVERS

DEFINITION
 The percentage of 'former relevant' care leavers aged 19-21 who were in suitable accommodation at their most recent contact, and the percentage who were not in employment, education or training at their most recent contact. Published data is included for comparison however data submitted to DfE by Local Authorities captures the young person's status around their 19th, 20th, or 21st birthday each year rather than the latest available information. This measures accommodation and employment outcomes for young people formerly in care - a key group at risk of social exclusion. It is intended to increase the proportion of former care leavers who are in suitable accommodation and employment, education or training.

PERFORMANCE ANALYSIS
 100.0% of our care leavers were in suitable accommodation at the end of 2021/22.
 Of the young people (aged 19-21), as of 31st March 2022, were Not in Education, Employment or Training (NEET).
 • 5.8% because of illness or disability
 • 9.6% because of other circumstances
 • 7.7% because of pregnancy or parenting.
 This equates to 23.1% of our care leavers which is positively below the internal target of 30% NEET.
 11.5% of our care leavers were engaging in education (7.7% are in studies beyond A level) and 65.4% young people were in training or employment (26.9% in full time, 38.5% in part time).

CSC 286	CSC 294
% Care Leavers in suitable accommodation	% Care Leavers NEET

IN MONTH PERFORMANCE	Target	90%	30%
	Apr-21	100.0	19.1
	May-21	100.0	25.0
	Jun-21	100.0	21.7
	Jul-21	100.0	20.8
	Aug-21	100.0	23.9
	Sep-21	100.0	21.3
	Oct-21	100.0	20.4
	Nov-21	100.0	20.4
	Dec-21	100.0	17.7
	Jan-22	98.1	20.8
	Feb-22	98.1	24.1
Mar-22	100.0	23.1	
ANNUAL TREND	2018/19	96.0	28.0
	2019/20	95.0	27.0
	2020/21	100.0	21.0
	2021/22	100.0	23.1



This page is intentionally left blank

**CHILDREN AND YOUNG PEOPLE SCRUTINY COMMITTEE
27 JUNE 2022**

WORK PROGRAMME

SUMMARY REPORT

Purpose of the Report

1. To consider the work programme items scheduled to be considered by this Scrutiny Committee during the 2022/23 Municipal Year and to consider any additional areas which Members would like to suggest should be included.

Summary

2. Members are requested to consider the attached draft work programme (**Appendix 1**) for the 2022/23 Municipal Year which has been prepared based on Officers recommendations and recommendations previously agreed by this Scrutiny Committee in the last Municipal Year.
3. Once the work programme has been approved by this Scrutiny Committee, any additional areas of work which Members wish to add to the agreed work programme will require the completion of a quad of aims in accordance with the previously approved procedure. (**Appendix 2**)

Recommendations

4. Members are requested to note the work programme and consider any additional items which they may wish to include.

**Luke Swinhoe
Assistant Director Law and Governance**

Background Papers

No background papers were used in the preparation of this report.

Author: Allison Hill

S17 Crime and Disorder	This report has no implications for Crime and Disorder
Health and Well Being	This report has no direct implications to the Health and Well Being of residents of Darlington.
Carbon Impact	There are no issues which this report needs to address.
Diversity	There are no issues relating to diversity which this report needs to address
Wards Affected	The impact of the report on any individual Ward is considered to be minimal.
Groups Affected	The impact of the report on any individual Group is considered to be minimal.
Budget and Policy Framework	This report does not represent a change to the budget and policy framework.
Key Decision	This is not a key decision.
Urgent Decision	This is not an urgent decision.
Council Plan	The report contributes to the Council Plan in a number of ways through the involvement of Members in contributing to the delivery of the Plan.
Efficiency	The Work Programmes are integral to scrutinising and monitoring services efficiently (and effectively), however this report does not identify specific efficiency savings.
Impact on Looked After Children and Care Leavers	This report has no impact on Looked After Children or Care Leavers

MAIN REPORT

Information and Analysis

5. The format of the proposed work programme has been reviewed to enable Members of this Scrutiny Committee to provide a rigorous and informed challenge to the areas for discussion.
6. The Council Plan sets the vision and strategic direction for the Council through to May 2023, with its overarching focus being ‘Delivering Success for Darlington’ .
7. In approving the Council Plan, Members have agreed to the vision for Darlington which is a place where people want to live and businesses want to locate, where the economy continues to grow, where people are happy and proud of the borough and where everyone has the opportunity to maximise their potential.
8. The vision for the Children and Young People portfolio is :

‘a borough where young people get the best start in life, can maximise their potential and are safe’

to maximise the potential of our young people by working with partners to maximise educational achievement; working to remove barriers to young people reaching their potential and working at a Tees Valley level to match jobs with skills and training.

Forward Plan and Additional Items

9. Any Member seeking to add a new item to the work programme will need to complete a quad of aims. **Appendix 2**
10. A copy of the Forward Plan has been attached at **Appendix 3** for information.

This page is intentionally left blank

CHILDREN AND YOUNG PEOPLE SCRUTINY WORK PROGRAMME

Topic	Timescale	Lead Officer	Link to PMF (metrics)	Scrutiny's Role
Performance Management and Regulation	Q4 27 June 2022 Q1 31 Oct 2022 Q2 19 Dec 2022	Sharon Raine	Agreed set of indicators	To receive quarterly monitoring reports and undertake any further detailed work into particular outcomes if necessary
Missing and Exploited Young People	27 June 2022	Alison Poulter		To provide Scrutiny with an update following concerns over the increase in numbers of missing
Children's Services Self-Assessment - Overview	5 September 2022	Chris Bell		To provide Scrutiny with the Annual Self-Assessment for Children's Services so that constructive 'critical friend' challenge takes place to drive improvement in public services
Children and Young People Public Health Overview and Childhood Healthy Weight Plan	5 September 2022	Ken Ross	PBH 009 PBH 013c PBH 016 PBH 018 PBH 020 PBH 021 PBH 054	Annual Monitoring

Topic	Timescale	Lead Officer	Link to PMF (metrics)	Scrutiny's Role
Local Designated Officer Annual Report	5 September 2022	James Stroyan		To examine the Annual Report and assure Members that allegations made against staff who work with children are reported and how they are actioned
Learning and Skills Service Annual Report	31 October 2022	Paul Richardson		Annual Report to demonstrate challenge
IRO Annual Report	31 October 2022	Martin Graham	CSC201	To examine the Annual Report of the Independent Reviewing Officer for Looked After Children
Darlington Safeguarding Partnership Annual Report	31 October 2022	Ann Baxter, Independent Chair		Annually monitoring
Adoption Tees Valley Annual Report 2021/22	31 October 2022	Vicky Davidson-Boyd, Service Manager, Adoption Tees Valley		Annual monitoring
Children and Young Peoples Plan	31 October 2022	Christine Shields		Annual Report
2022/23 Childcare Sufficiency Assessment	27 February 2023	Tony Murphy/Nicola Davies		Annual Report

REVIEWS PENDING

<p>Autism Provision Review Group</p>	<p>Final Report to Health and Housing on 14 April 2021.</p> <p>Cross Party Joint Working Group to be established – ongoing.</p>	<p>Christine Shields</p>	<p>To review the provisions and services and contractual arrangements between this Council and our providers who provide the Autism provisions, diagnoses and support services for Darlington</p>
---	---	--------------------------	---

MEMBER BRIEFINGS

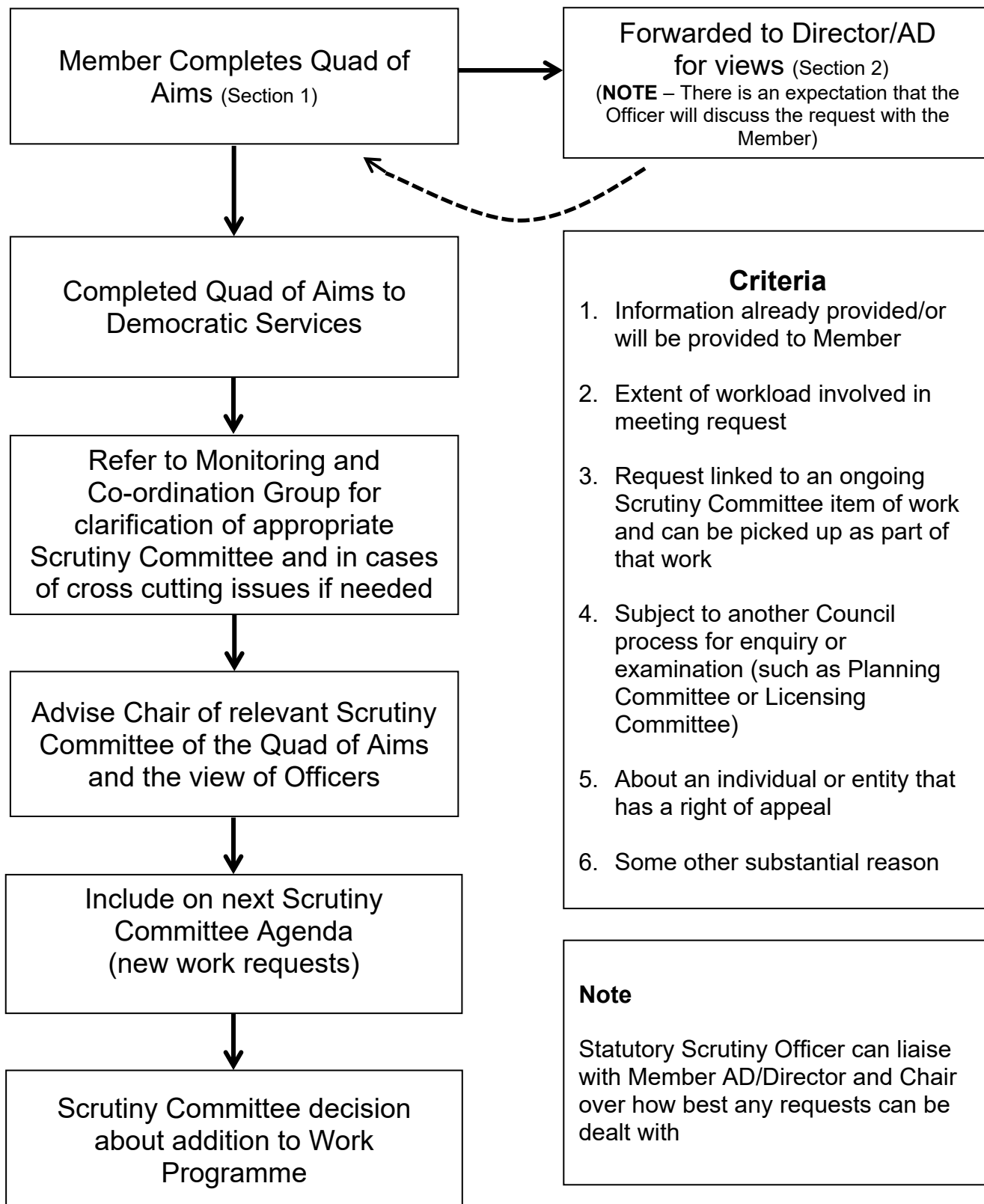
Topic	Timescale	Lead Officer	Link to PMF (metrics)	Scrutiny's Role
<p>Tees Valley Combined Authority Education and Skills – Role and Funding</p>	<p>4 February 2022</p>	<p>Shona Duncan, Head of Employment, Education and Skills, Tees Valley Combined Authority</p>		<p>Joint presentation to CYP and Economy and Resources Scrutiny to receive specific information on the funding allocation as it relates to this authority and where the spend (adult education up to 28 years) is being focused.</p>
<p>Meet with Young People (Council or Schools Councils/Youth Partnership)</p>	<p>22 February 2022</p>	<p>Joanne Shutt</p>		

ARCHIVED ITEMS

Topic	When considered	Lead Officer	Scrutiny's Role
<p>SEND - Outcomes for Parents following Covid-19</p>	<p>4 January 2021</p>	<p>Carla Scaith Darlington Parent Carer Forum</p>	<p>To continue to monitor SEND/ EHCPs. To receive the survey results from the Parent Carer Forum SEND Survey and to receive information relating to experiences of the Parent Carer Forum.</p>

Trauma and Horizon Scanning	23 August 2021	Paige Thomason/ Martin Webster	To examine how Children’s Services are starting to embed and respond to Trauma.
Looked After Children Off-framework.	23 August 2021	Jane Kochanowski	To examine the current situation with those placed off framework, commissioning of accommodation and costs
Adoptive Services	Item request approved by Scrutiny at the meeting held on 29 June 2020 – Not progressed	Vicky Davidson-Boyd	To examine how the Regional Adoption Agency is serving Darlington and to examine how the Coronavirus Pandemic has affected adoption
Early Help services available for new mothers	20 December 2021	Joanne Benson	To examine services available post and pre pandemic
Developing Darlington Care Collective	20 December 2021	Christine Shields/Martin Webster	To provide an Update on the Care Collective
Medium Term Financial Plan 2022/23 to 2025/26	Special 10 January 2022	Elizabeth Davison	To consider the MTFP 2022/23 to 2025/26 and make any views, and in particular, those in relation to those services and finances which are specifically within the remit of this Scrutiny Committee
Accessibility Strategy	21 February 2022	Tony Murphy/ Eleanor Marshall	Progress to date in respect of the review of the Special Educational Needs (SEND) Accessibility Strategy 2017-2020
Vulnerable Pupil Panel	25 April 2022	Tony Murphy/Calvin Kipling	To examine the mechanics of the vulnerable pupil panel and to learn about the process and what the scale of the attendance challenge is

PROCESS FOR ADDING AN ITEM TO SCRUTINY COMMITTEE'S PREVIOUSLY APPROVED WORK PROGRAMME



PLEASE RETURN TO DEMOCRATIC SERVICES

QUAD OF AIMS (MEMBERS' REQUEST FOR ITEM TO BE CONSIDERED BY SCRUTINY)

SECTION 1 TO BE COMPLETED BY MEMBERS

NOTE – This document should only be completed if there is a clearly defined and significant outcome from any potential further work. This document should **not** be completed as a request for or understanding of information.

REASON FOR REQUEST?	RESOURCE (WHAT OFFICER SUPPORT WOULD YOU REQUIRE?)
PROCESS (HOW CAN SCRUTINY ACHIEVE THE ANTICIPATED OUTCOME?)	HOW WILL THE OUTCOME MAKE A DIFFERENCE?

Page 50

Signed Councillor

Date

SECTION 2 TO BE COMPLETED BY DIRECTORS/ASSISTANT DIRECTORS
(NOTE – There is an expectation that Officers will discuss the request with the Member)

	Criteria
1. (a) Is the information available elsewhere? Yes No If yes, please indicate where the information can be found (attach if possible and return with this document to Democratic Services)	1. Information already provided/or will be provided to Member
(b) Have you already provided the information to the Member or will you shortly be doing so?	2. Extent of workload involved in meeting request
2. If the request is included in the Scrutiny Committee work programme what are the likely workload implications for you/your staff?	3. Request linked to an ongoing Scrutiny Committee item of work and can be picked up as part of that work
3. Can the request be included in an ongoing Scrutiny Committee item of work and picked up as part of that?	4. Subject to another Council process for enquiry or examination (such as Planning Committee or Licensing Committee)
4. Is there another Council process for enquiry or examination about the matter currently underway?	5. About an individual or entity that has a right of appeal
5. Has the individual or entity some other right of appeal?	6. Some other substantial reason
6. Is there any substantial reason (other than the above) why you feel it should not be included on the work programme?	

PLEASE RETURN TO DEMOCRATIC SERVICES

Signed **Position** **Date**

PLEASE RETURN TO DEMOCRATIC SERVICES

**DARLINGTON BOROUGH COUNCIL
FORWARD PLAN**



DARLINGTON

Borough Council

**FORWARD PLAN
FOR THE PERIOD: 4 MAY 2022 - 30 SEPTEMBER 2022**

Title	Decision Maker and Date
Agreed Syllabus for Religious Education	Cabinet 22 Jun 2022
CCTV Replacement Camera Programme	Cabinet 22 Jun 2022
Council Chamber Refurbishment	Cabinet 22 Jun 2022
Darlington Station Improvement Project - Proceed to Delivery	Cabinet 22 Jun 2022
Dolphin Centre Mechanical and Electrical Replacement – Release of Capital	Cabinet 22 Jun 2022
Housing Management Policy	Cabinet 22 Jun 2022
Land at Blackwell - Proposed Development and Parkland	Cabinet 22 Jun 2022
Land at Faverdale - Burtree Garden Village Development	Cabinet 22 Jun 2022
Proposed Hump Speed Table Objection - Newton Lane	Cabinet 22 Jun 2022
Public Space Protection Order – Darlington Town Centre	Cabinet 22 Jun 2022
Representation on Other Bodies 2022/23	Cabinet 22 Jun 2022
Schedule of Transactions - June 2022	Cabinet 22 Jun 2022
Supplementary Planning Guidance (SPG) Design Code - Burtree Garden Village	Council 14 Jul 2022 Cabinet 22 Jun 2022
Collection of Council Tax, Business Rates and Rent 2021-22	Cabinet 5 Jul 2022
Council Plan Performance Report 2021/22 – Quarters 3 and 4	Cabinet 5 Jul 2022
Improvements to Coniscliffe Road - Encouraging Footfall in the Town Centre	Cabinet 5 Jul 2022

**DARLINGTON BOROUGH COUNCIL
FORWARD PLAN**

Project Position Statement and Capital Programme Monitoring Outturn 21/22	Cabinet 5 Jul 2022
Project Position Statement and Capital Programme Monitoring 2022/23 - Quarter 1	Cabinet 5 Jul 2022
Revenue Budget Outturn 2020/21	Cabinet 5 Jul 2022
Revenue Budget Monitoring 2022/23 - Quarter 1	Cabinet 5 Jul 2022
West Cemetery Drainage	Cabinet 5 Jul 2022
Xentrall Shared Services Annual Report	Cabinet 5 Jul 2022
Annual Review of the Investment Fund	Cabinet 6 Sep 2022
Annual Audit Letter 2020/21	Cabinet 6 Sep 2022
Complaints Made to Local Government Ombudsman	Cabinet 6 Sep 2022
Complaints, Compliments and Comments Annual Reports 2021/22	Cabinet 6 Sep 2022
Regulatory Investigatory Powers Act (RIPA)	Cabinet 6 Sep 2022
Restoration of Locomotion No 1 Replica	Cabinet 6 Sep 2022
School Term Dates 2024/25	Cabinet 6 Sep 2022